

Architectural  
Civil/landscaping  
Structural  
Mechanical/plumbing  
Electrical

# Demolition, Utility Relocation, Grading Berrien County Football Stadium

Berrien County School System  
500 Smith Ave, Nashville, GA 31639

Facility Code Number: 610-1601

ARCHITECTURAL

Altman + Barrett Architects P.C.  
117 West Main Street  
Hahira, Georgia 31632  
(229) 585-9018

CIVIL/LANDSCAPING

P.C. Simonton & Associates, Inc.  
309 North Main Street  
Hinesville, Georgia 31310  
(912) 368-5212

STRUCTURAL

Lindsey & Ritter, Inc.  
401 East Jane Street  
Valdosta, Georgia 31601  
(229) 242-9897

MECHANICAL/PLUMBING

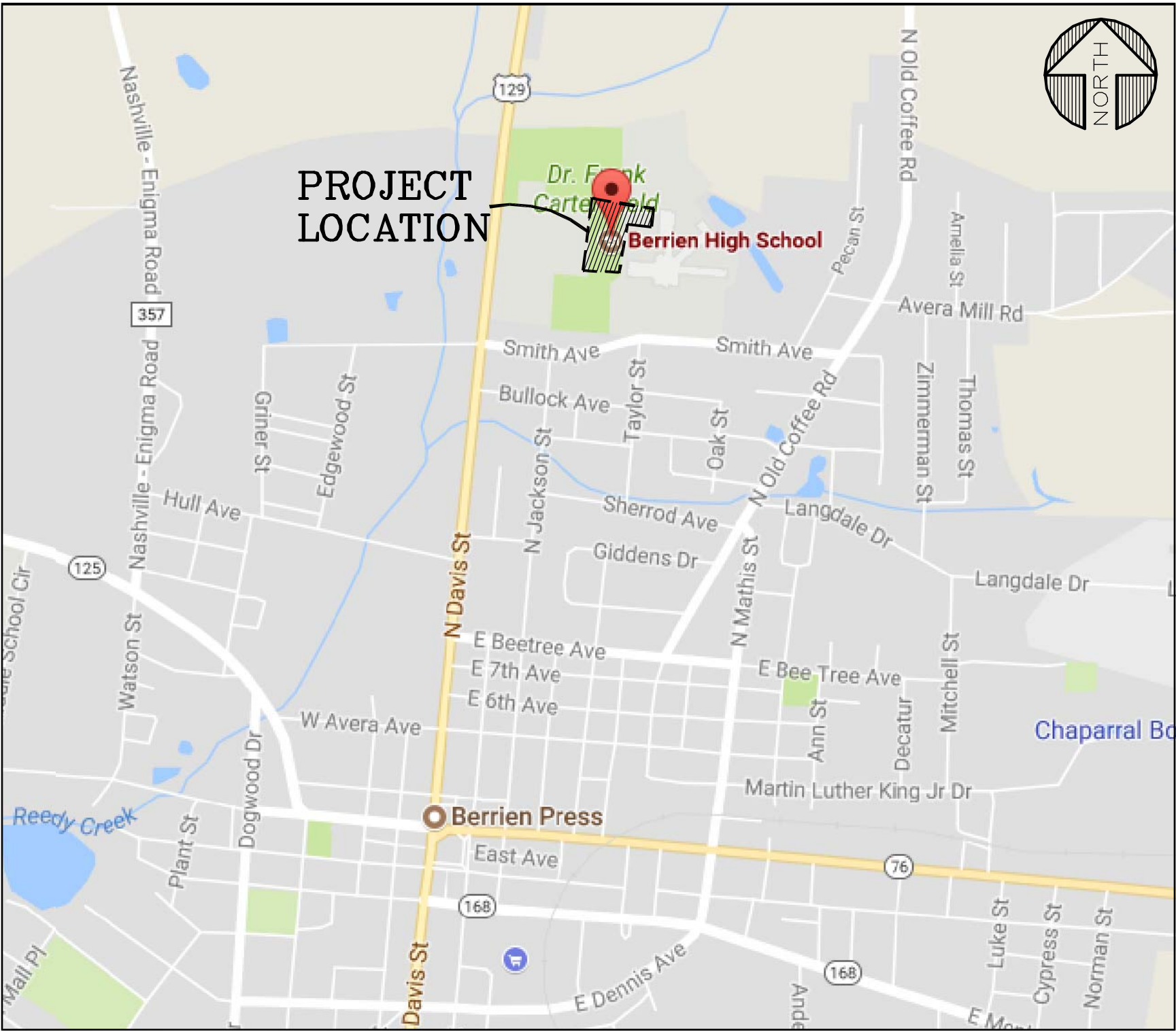
Dulohery Weeks Engineering  
577 Mulberry Street  
Macon, Georgia 30201  
(478) 845-3096

ELECTRICAL

Dulohery Weeks Engineering  
577 Mulberry Street  
Macon, Georgia 30201  
(478) 845-3096

LOCATION MAP

N.T.S.

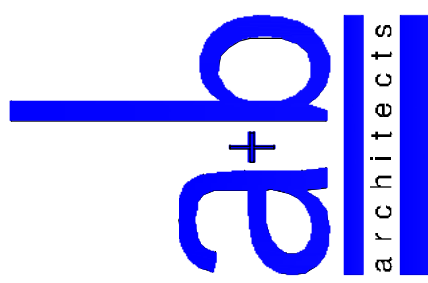


INDEX TO DRAWINGS

- GENERAL
- X1000 COVER SHEET AND DRAWING INDEX
- CIVIL
- C1000 DEMOLITION PLAN
  - C2001 SITE PLAN
  - C3001 GRADING PLAN
  - C3002 DRAINAGE PROFILES
  - C4001 INITIAL PHASE ESPC PLAN
  - C4002 INTERM. PHASE ESPC PLAN
  - C4003 FINAL PHASE ESPC PLAN
  - C5001 DETAILS
  - C5002 DETAILS
  - C5003 DETAILS
- ELECTRICAL
- E1001 SITE PLAN - ELECTRICAL DEMOLITION
  - E1002 SITE PLAN - ELECTRICAL NEW WORK

Altman + Barrett

NOT FOR CONSTRUCTION



Altman + Barrett  
a r c h i t e c t s  
P.O. BOX 665 - 117 WEST MAIN ST.  
HAHIRA, GEORGIA 31632  
PHONE # (229) 585-9018

DATE:	11/09/2017
DRAWN:	L.FINKLANG
CHECKED:	W. ALTMAN
REVISIONS:	1.
www.altmanbarrettarchitects.com	

Demolition, Utility Relocation, Grading  
Berrien County Football Stadium  
Berrien County School System  
500 Smith Ave, Nashville, Georgia 31639

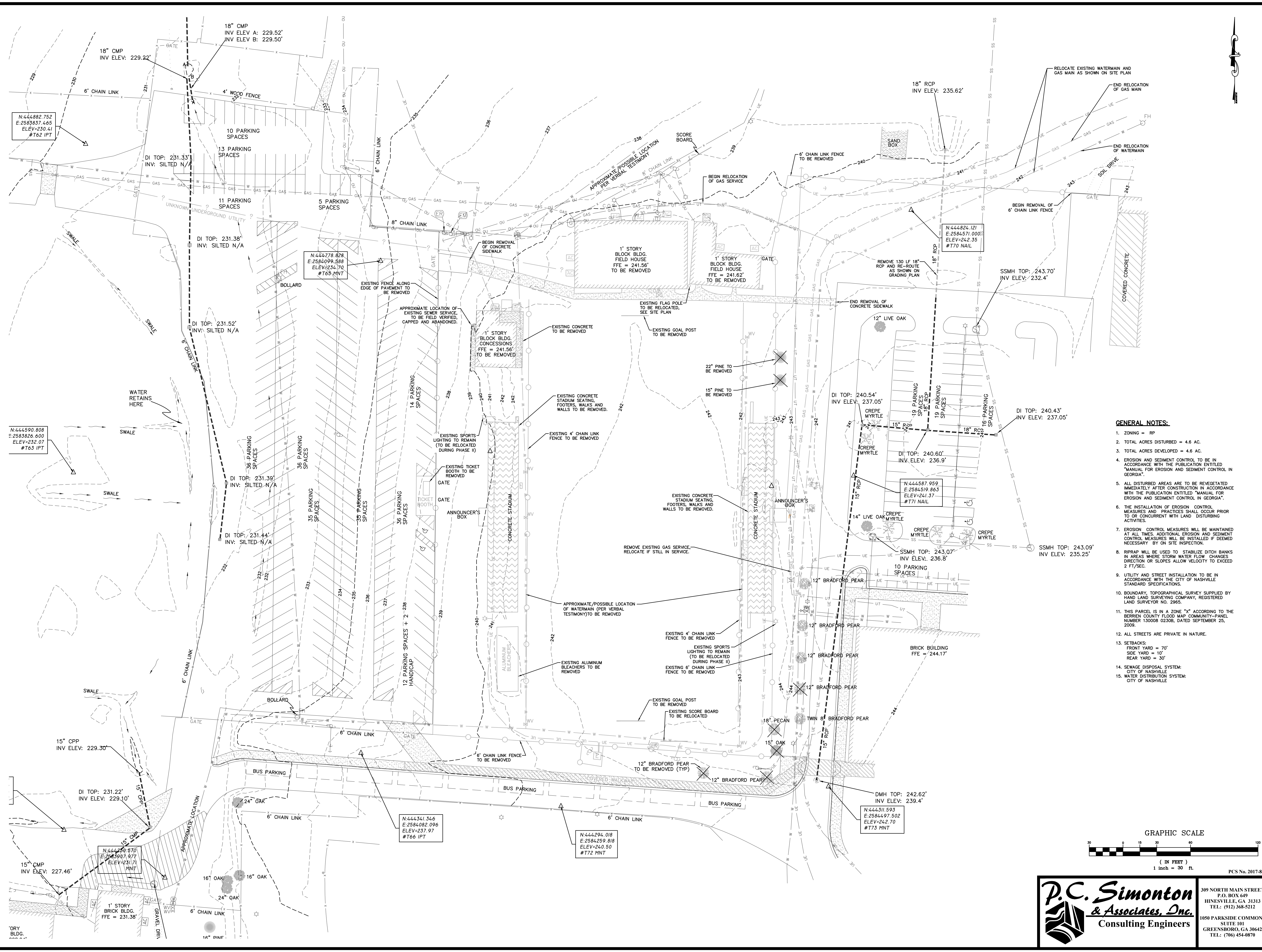
PHASE 1  
X1000  
FACILITY NO: 610-1601

DRRAWINGS ARE THE PROPERTY OF THE ARCHITECT  
AND SHALL NOT BE REPRODUCED OR USED WITHOUT  
WRITTEN PERMISSION AND SEAL  
© 2017 ALTMAN + BARRETT ARCHITECTS, P.C.

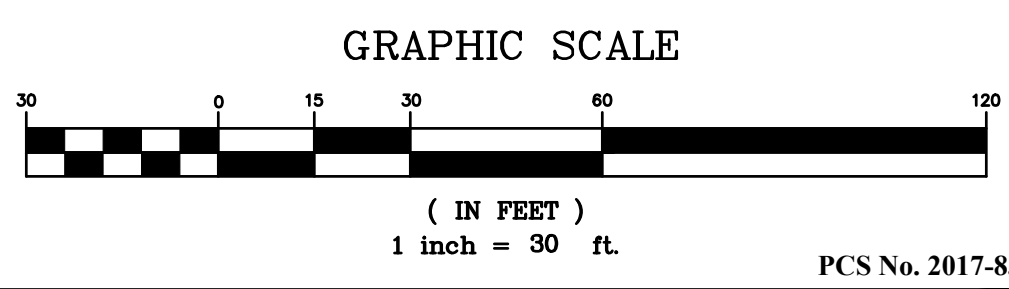
PROJECT NO: 17026  
Tuesday, November 14, 2017



A l t m a n + B a r r e t t a r c h i t e c t s



- GENERAL NOTES:**
1. ZONING = RP
  2. TOTAL ACRES DISTURBED = 4.6 AC.
  3. TOTAL ACRES DEVELOPED = 4.6 AC.
  4. EROSION AND SEDIMENT CONTROL TO BE IN ACCORDANCE WITH THE PUBLICATION ENTITLED "MANUAL FOR EROSION AND SEDIMENT CONTROL IN GEORGIA".
  5. ALL DISTURBED AREAS ARE TO BE REVEGETATED IMMEDIATELY AFTER CONSTRUCTION IN ACCORDANCE WITH THE PUBLICATION ENTITLED "MANUAL FOR EROSION AND SEDIMENT CONTROL IN GEORGIA".
  6. THE INSTALLATION OF EROSION CONTROL MEASURES AND PRACTICES SHALL OCCUR PRIOR TO OR CONCURRENT WITH LAND DISTURBING ACTIVITIES.
  7. EROSION CONTROL MEASURES WILL BE MAINTAINED AT ALL TIMES. ADDITIONAL EROSION AND SEDIMENT CONTROL MEASURES WILL BE INSTALLED IF DEEMED NECESSARY BY ON SITE INSPECTION.
  8. RIPRAP WILL BE USED TO STABILIZE DITCH BANKS IN AREAS WHERE STORM WATER FLOW CHANGES DIRECTION OR SLOPES ALLOW VELOCITY TO EXCEED 2 FT/SEC.
  9. UTILITY AND STREET INSTALLATION TO BE IN ACCORDANCE WITH THE CITY OF NASHVILLE STANDARD SPECIFICATIONS.
  10. BOUNDARY, TOPOGRAPHICAL SURVEY SUPPLIED BY HAND LAND SURVEYING COMPANY, REGISTERED LAND SURVEYOR NO. 2965.
  11. THIS PARCEL IS IN A ZONE "X" ACCORDING TO THE BERRIEN COUNTY FLOOD MAP COMMUNITY-PANEL NUMBER 130009 0230B, DATED SEPTEMBER 25, 2009.
  12. ALL STREETS ARE PRIVATE IN NATURE.
  13. SETBACKS:  
FRONT YARD = 70'  
SIDE YARD = 10'  
REAR YARD = 30'
  14. SEWAGE DISPOSAL SYSTEM:  
CITY OF NASHVILLE
  15. WATER DISTRIBUTION SYSTEM:  
CITY OF NASHVILLE



**P.C. Simonton & Associates, Inc.**  
Consulting Engineers

309 NORTH MAIN STREET  
P.O. BOX 649  
HINESVILLE, GA 31313  
TEL: (912) 368-5212

1050 PARKSIDE COMMONS  
SUITE 101  
GREENSBORO, GA 30642  
TEL: (706) 454-0870

Altman + Barrett

LEVEL II CERTIFICATION # 55538

DATE: 11/06/2017

**Altman + Barrett**  
a r c h i t e c t s

P.O. BOX 665 - 117 WEST MAIN ST.  
HAHIRA, GEORGIA 31632  
PHONE # (229) 585-9018

DATE: 11/09/2017  
DRAWN: M. BARROW  
CHECKED: M. BARROW  
REVISIONS: 1

www.altmanbarrettarchitects.com

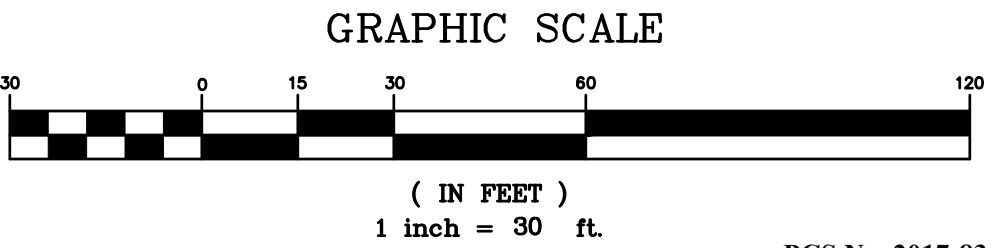
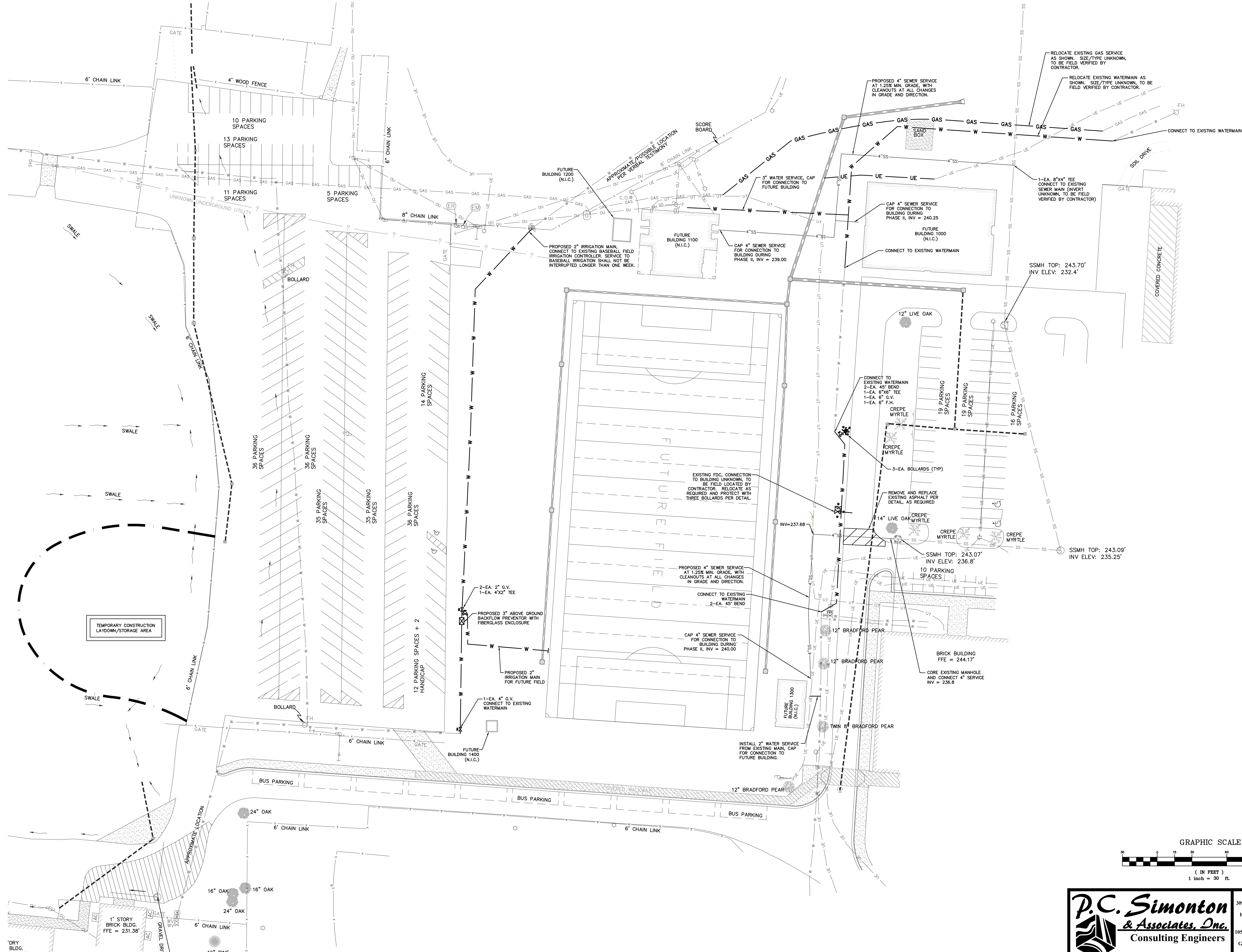
Demolition, Utility Relocation, Grading  
Berrien County Football Stadium  
Berrien County School System  
500 Smith Ave, Nashville, Georgia 31639

PHASE 1  
DEMOLITION PLAN  
**C1001**  
FACILITY NO: 610-1601

PCSN 2017-83

PROJECT NO: 17026





309 NORTH MAIN STREET  
P.O. BOX 649  
HINESVILLE, GA 31313  
TEL: (912) 368-5212  
1050 PARKSIDE COMMONS  
SUITE 101  
GREENSBORO, GA 30642  
TEL: (706) 454-0870

Demolition, Utility Relocation, Grading  
Berrien County Football Stadium  
Berrien County School System  
500 Smith Ave, Nashville, Georgia 31639

PHASE 1  
SITE PLAN  
C2001  
FACILITY NO: 610-1601  
PROJECT NO: 17026

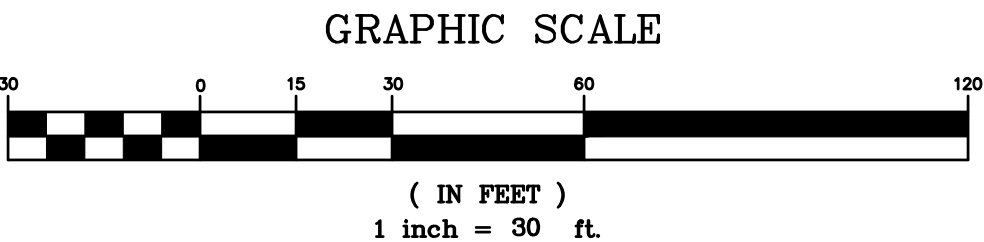
DATE: 11/09/2017  
DRAWN: M. BARROW  
CHECKED: M. BARROW  
REVISIONS: 1  
www.altmanbarrettarchitects.com

Altman + Barrett  
a r c h i t e c t s  
P.O. BOX 665 - 117 WEST MAIN ST.  
HAHIRA, GEORGIA 31632  
PHONE # (229) 585-9018

LEVEL II CERTIFICATION # 55538  
DATE: 11/06/2017  
GEORGIA REGISTERED PROFESSIONAL ENGINEER  
MICHAEL J. BARROW

Altman + Barrett





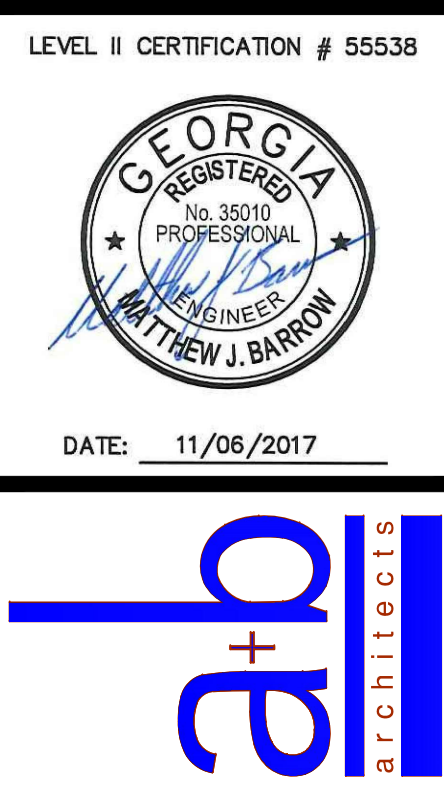
309 NORTH MAIN STREET  
P.O. BOX 649  
HINESVILLE, GA 31313  
TEL: (912) 368-5212  
1050 PARKSIDE COMMONS  
SUITE 101  
GREENSBORO, GA 30642  
TEL: (706) 454-0870

Demolition, Utility Relocation, Grading  
Berrien County Football Stadium  
Berrien County School System  
500 Smith Ave, Nashville, Georgia 31639

PHASE 1  
GRADING PLAN  
C3001  
FACILITY NO: 610-1601  
PROJECT NO: 17026

DATE: 11/09/2017  
DRAWN: M. BARROW  
CHECKED: M. BARROW  
REVISIONS: 1  
www.altmanbarrettarchitects.com

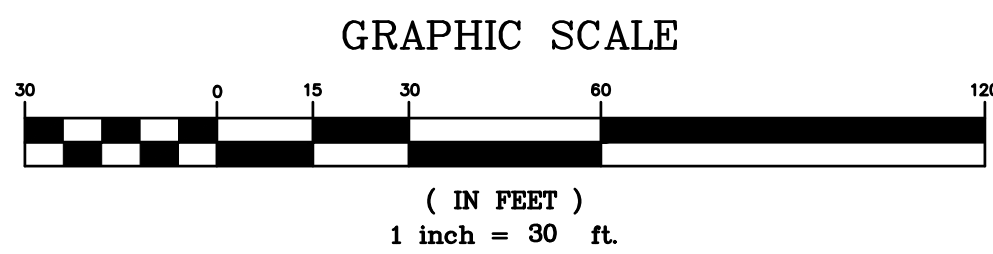
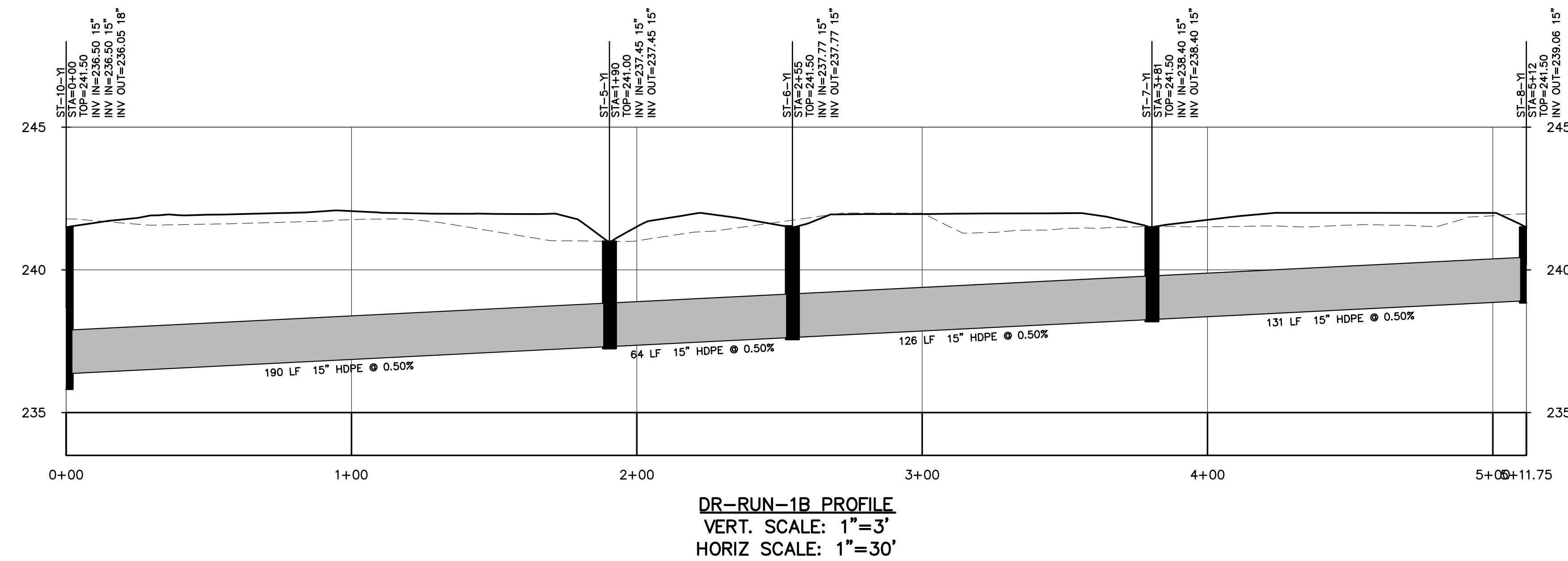
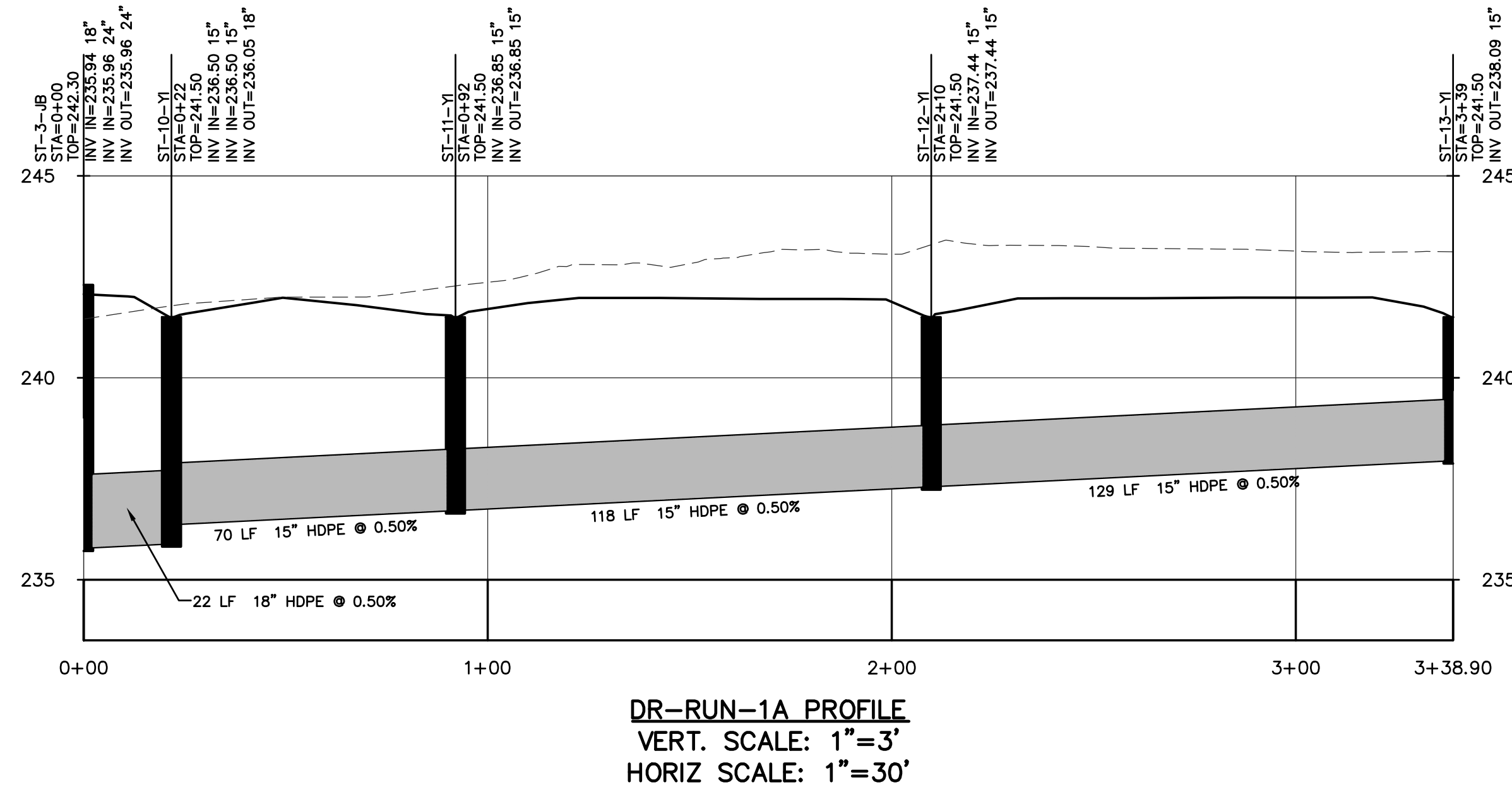
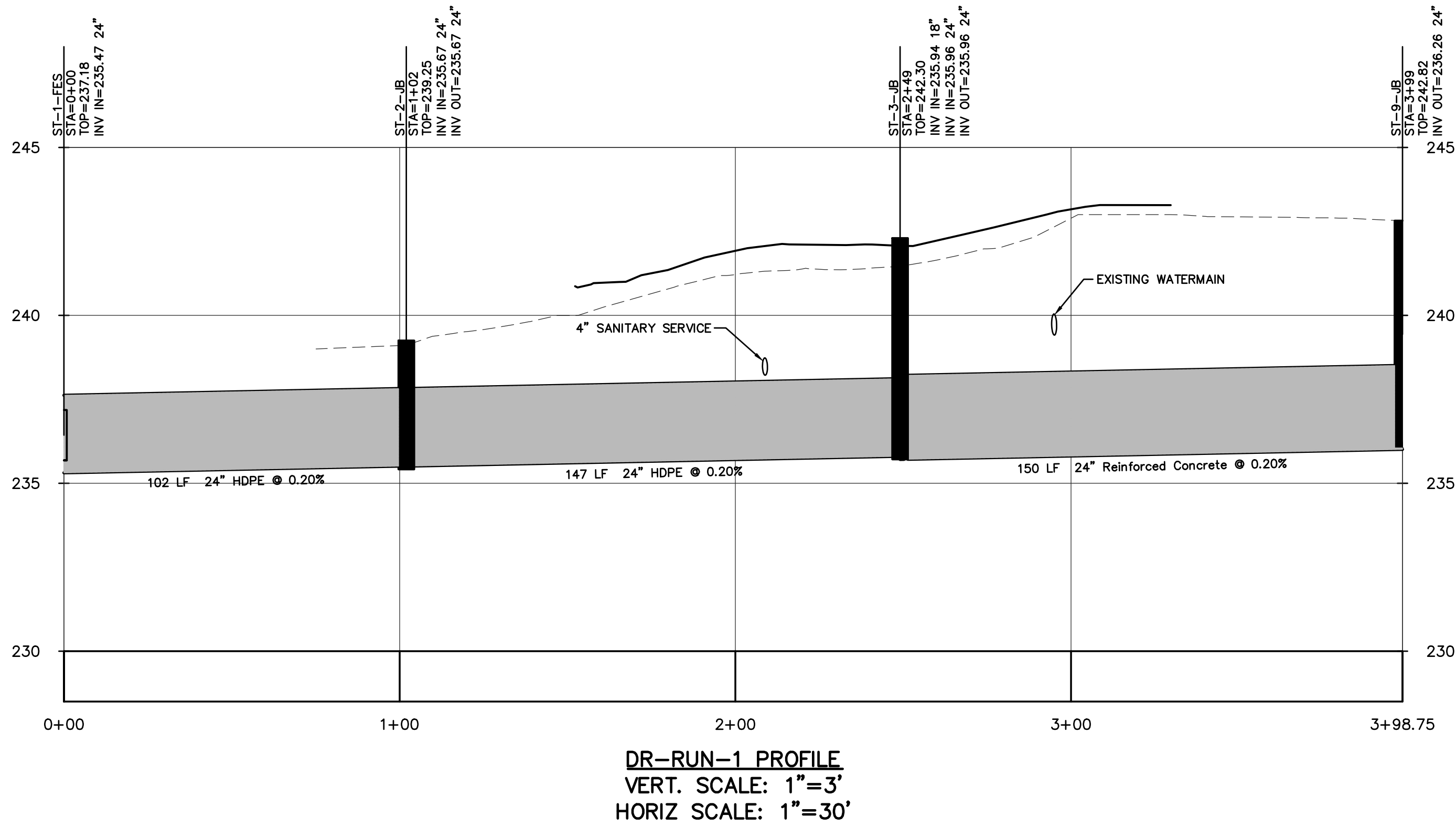
Altman + Barrett  
a r c h i t e c t s  
P.O. BOX 665 - 117 WEST MAIN ST.  
HAHIRA, GEORGIA 31632  
PHONE # (229) 585-9018



Altman + Barrett

LEVEL II CERTIFICATION # 55538








**P.C. Simonton  
& Associates, Inc.**  
Consulting Engineers

309 NORTH MAIN STREET  
P.O. BOX 649  
HINESVILLE, GA 31313  
TEL: (912) 368-8212

1050 PARKSIDE COMMONS  
SUITE 101  
GREENSBORO, GA 30642  
TEL: (706) 454-0870

Altman + Barrett

LEVEL II CERTIFICATION # 55538



DATE: 11/06/2017

Altman + Barrett

architects

P.O. BOX 665 - 117 WEST MAIN ST.  
HAHIRA, GEORGIA 31632  
PHONE # (229) 585-9018

DATE:	11/09/2017
DRAWN:	M. BARROW
CHECKED:	M. BARROW
REVISIONS:	1.
www.altmanbarrettarchitects.com	

Demolition, Utility Relocation, Grading  
Berrien County Football Stadium  
Berrien County School System  
500 Smith Ave, Nashville, Georgia 31639

PHASE 1

DRAINAGE PROFILES

C3002

FACILITY NO: 610-1601

OWNERS ARE THE PROPERTY OF THE ARCHITECT  
AND SHALL NOT BE REPRODUCED OR USED WITHOUT  
WRITTEN PERMISSION AND CREDIT  
© 2017 ALTMAN + BARRETT ARCHITECTS, P.C.

PROJECT NO: 17026

Monday, November 13, 2017





CONSTRUCTION ACTIVITY DESCRIPTION

INITIAL PHASE - CONSISTS OF INSTALLING CONSTRUCTION EXIT, PERIMETER BMPs, AND DUST CONTROL. BEGIN CLEARING, GRUBBING, AND GRADING.

INTERMEDIATE PHASE - MAINTAIN CONSTRUCTION EXIT AND SILT FENCE. USE DUST CONTROL, MULCHING, AND TEMPORARY GRASSING WHERE INDICATED.

FINAL PHASE - ONCE PERMANENT GRASSING IS ESTABLISHED TEMPORARY MEASURES CAN BE REMOVED INCLUDING: INLET TRAPS, SILT FENCE, CONSTRUCTION EXITS.

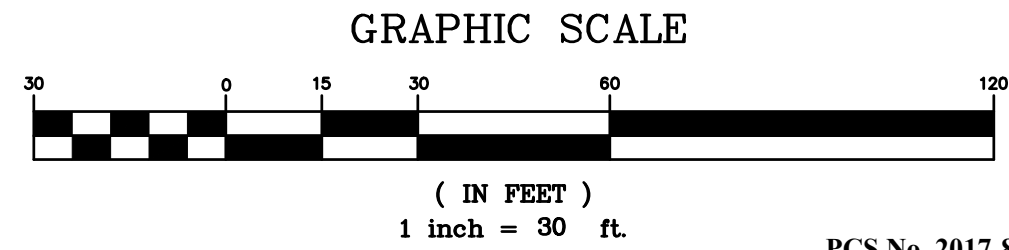
SILT FENCE IS LIMITS OF DISTURBANCE

SOILS SERIES LEGEND

TqB TIFTON LOAMY SAND

NOTE: THE ENTIRE DISTURBED AREA IS COMPRISED OF TqB-TIFTON LOAMY SAND.

SEDIMENT STORAGE CALCULATIONS:  
A TEMPORARY SEDIMENT BASIN IS NOT PROPOSED FOR THIS SITE DUE TO THE NATURE OF THE PROJECT, WHICH INCLUDES PREVIOUSLY DISTURBED AREAS AND THE ABSENCE OF MASS GRADING. SILT FENCE AND SEDIMENT INLET TRAPS WILL BE USED TO PREVENT THE ESCAPE OF SEDIMENT FROM THE SITE.



309 NORTH MAIN STREET  
P.O. BOX 649  
HINESVILLE, GA 31313  
TEL: (912) 368-5212

1050 PARKSIDE COMMONS  
SUITE 101  
GREENSBORO, GA 30642  
TEL: (706) 454-0870

Demolition, Utility Relocation, Grading  
Berrien County Football Stadium  
Berrien County School System  
500 Smith Ave, Nashville, Georgia 31639

PHASE 1  
INITIAL PHASE ESPP PLAN  
C4001  
FACILITY NO: 610-1601

PROJECT NO: 17026

Altman + Barrett  
a r c h i t e c t s

P.O. BOX 665 - 117 WEST MAIN ST.  
HAHIRA, GEORGIA 31632  
PHONE # (229) 585-9018

LEVEL II CERTIFICATION # 55538

GEORGIA REGISTERED PROFESSIONAL ENGINEER  
NEW J. BARROW

DATE: 11/06/2017

Altman + Barrett  
a r c h i t e c t s

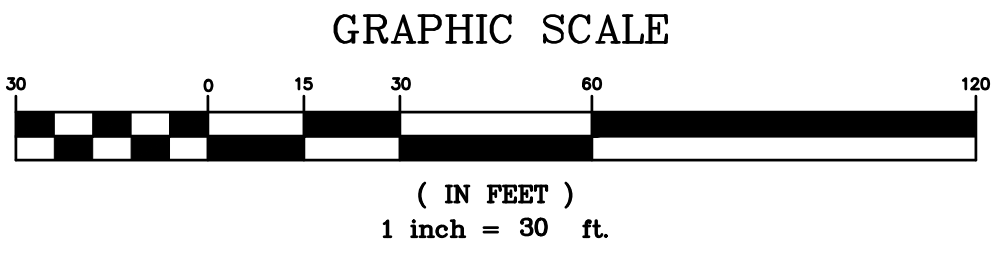
DATE: 11/09/2017  
DRAWN: M. BARROW  
CHECKED: M. BARROW  
REVISIONS: 1

www.altmanbarrettarchitects.com





STORM OUTLET PROTECTION									
STRUCTURE NO.	Do	Lo	W1	W2	d50	D	FLOW RATE	VELOCITY	
	(IN)	(IN)	(IN)	(IN)	(IN)	(IN)	(GPM)	(FPS)	
ST# 1	24"	12"	6"	14"	6"	13.5"	20.16	6.42	



309 NORTH MAIN STREET  
P.O. BOX 649  
HINESVILLE, GA 31313  
TEL: (912) 368-5212  
1050 PARKSIDE COMMONS  
SUITE 101  
GREENSBORO, GA 30642  
TEL: (706) 454-0870

Demolition, Utility Relocation, Grading  
Berrien County Football Stadium  
Berrien County School System  
500 Smith Ave, Nashville, Georgia 31639

PHASE 1  
INTERNAL PHASE EPC PLAN  
C4002  
FACILITY NO: 610-1601  
PROJECT NO: 17026

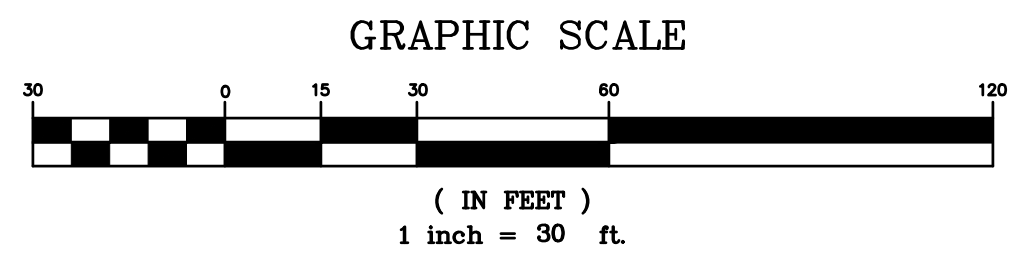
DATE: 11/09/2017  
DRAWN: M. BARROW  
CHECKED: M. BARROW  
REVISIONS: 1  
www.altmanbarrowarchitects.com

Altman + Barrett  
a r c h i t e c t s  
P.O. BOX 665 - 117 WEST MAIN ST.  
HAHIRA, GEORGIA 31632  
PHONE # (229) 585-9018

LEVEL II CERTIFICATION # 55538  
DATE: 11/06/2017  
GEORGIA REGISTERED PROFESSIONAL ENGINEER  
MICHAEL J. BARROW

Altman + Barrett



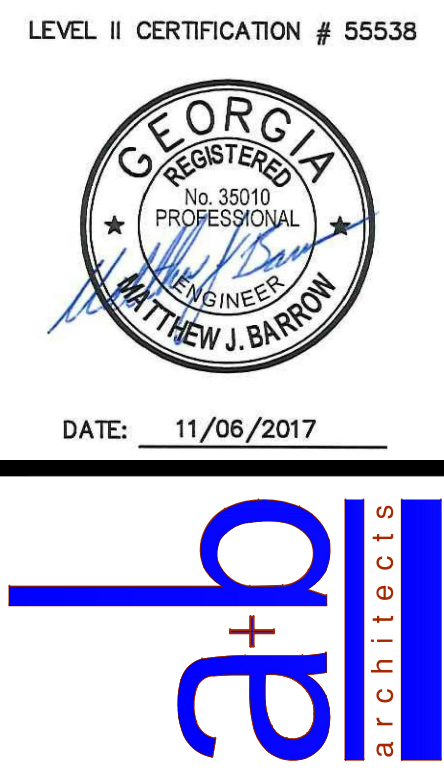


309 NORTH MAIN STREET  
P.O. BOX 649  
HINESVILLE, GA 31313  
TEL: (912) 368-5212  
1050 PARKSIDE COMMONS  
SUITE 101  
GREENSBORO, GA 30642  
TEL: (706) 454-0870

Demolition, Utility Relocation, Grading  
Berrien County Football Stadium  
Berrien County School System  
500 Smith Ave, Nashville, Georgia 31639  
PHASE 1  
FINAL PHASE ES&P PLAN  
C4003  
FACILITY NO: 610-1601  
PROJECT NO: 17026

DATE:	11/09/2017
DRAWN:	M. BARROW
CHECKED:	M. BARROW
REVISIONS:	1

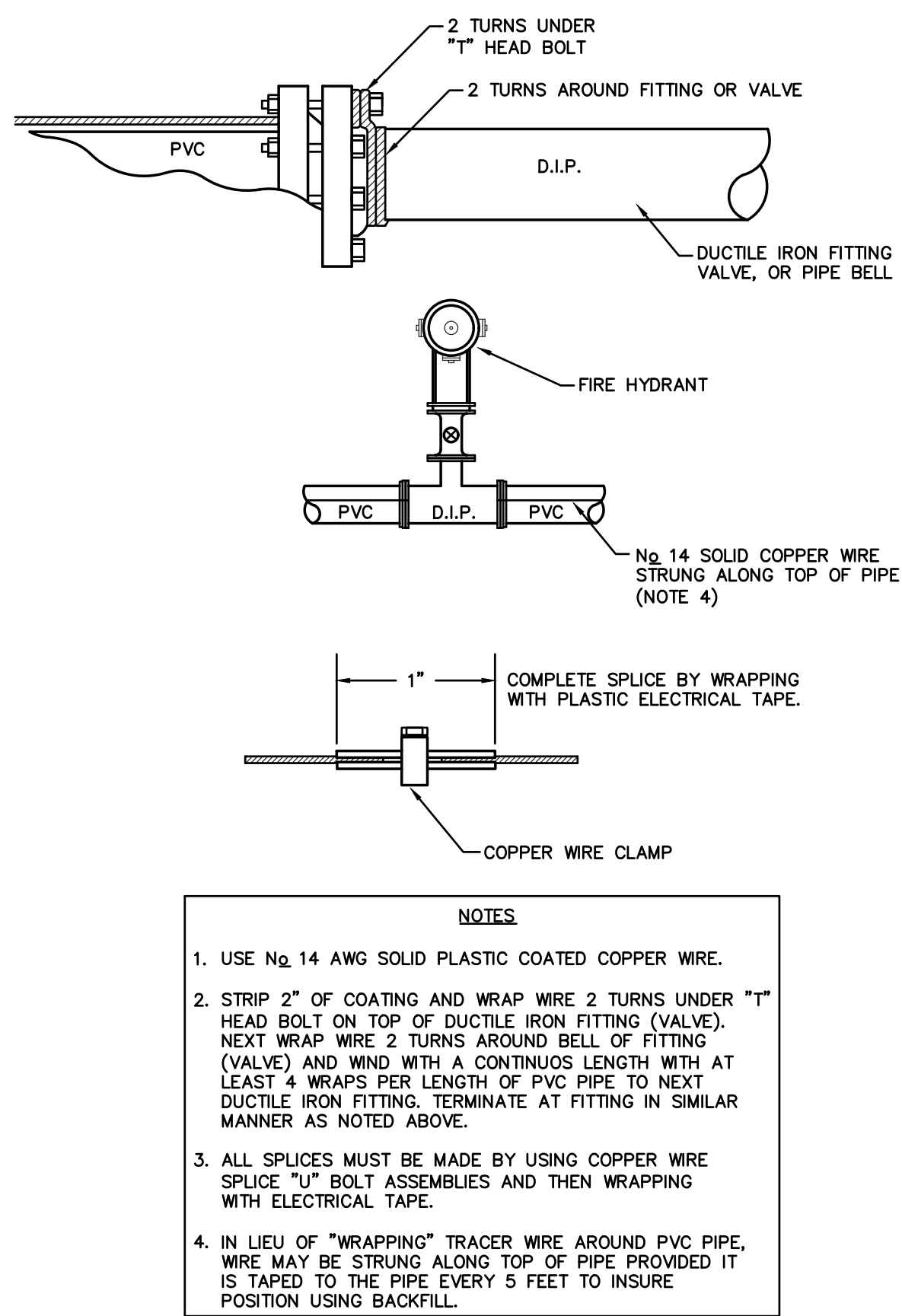
Altman + Barrett  
a r c h i t e c t s  
P.O. BOX 665 - 117 WEST MAIN ST.  
HAHIRA, GEORGIA 31632  
PHONE # (229) 585-9018



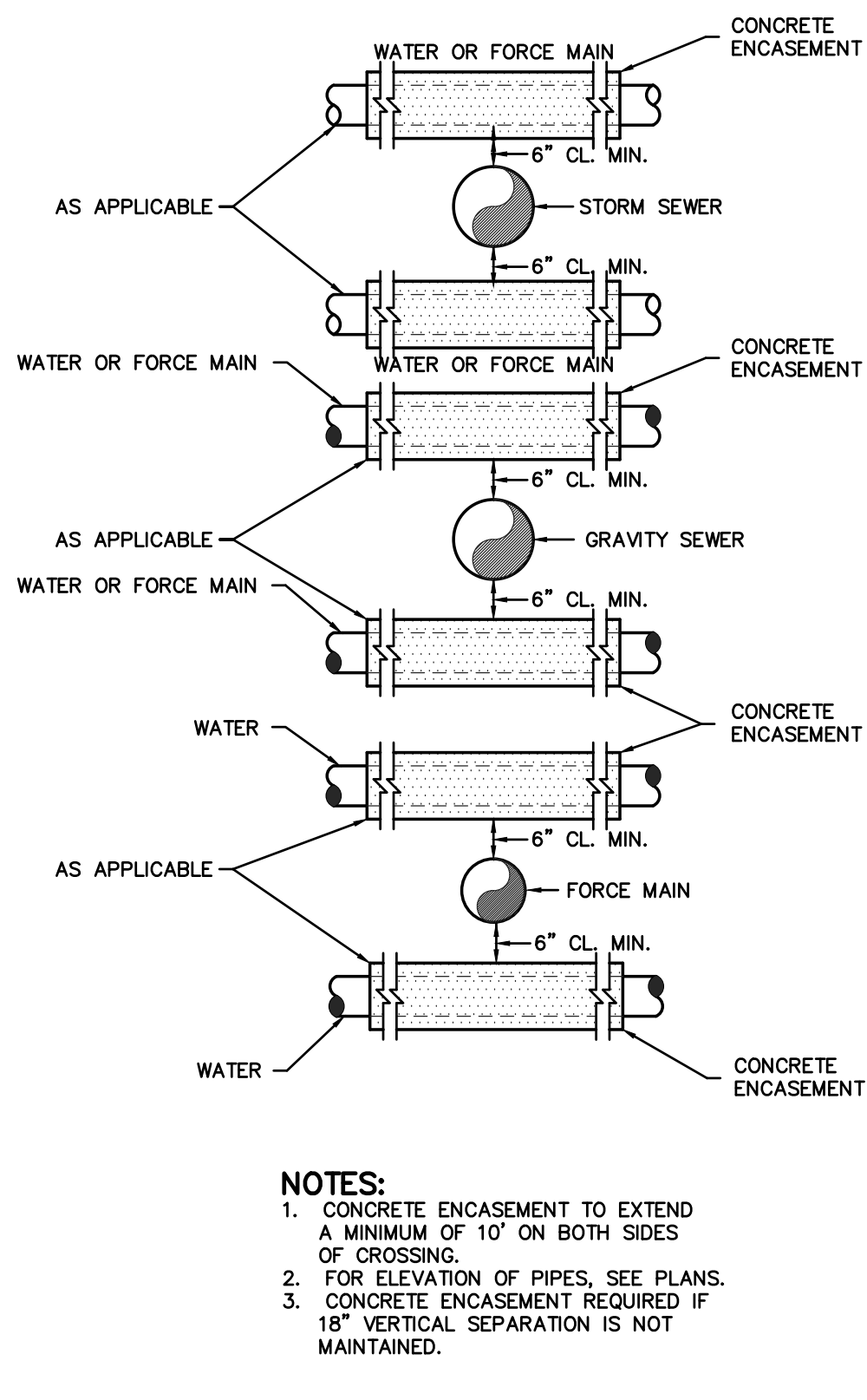
Altman + Barrett  
LEVEL II CERTIFICATION # 55538  
DATE: 11/06/2017



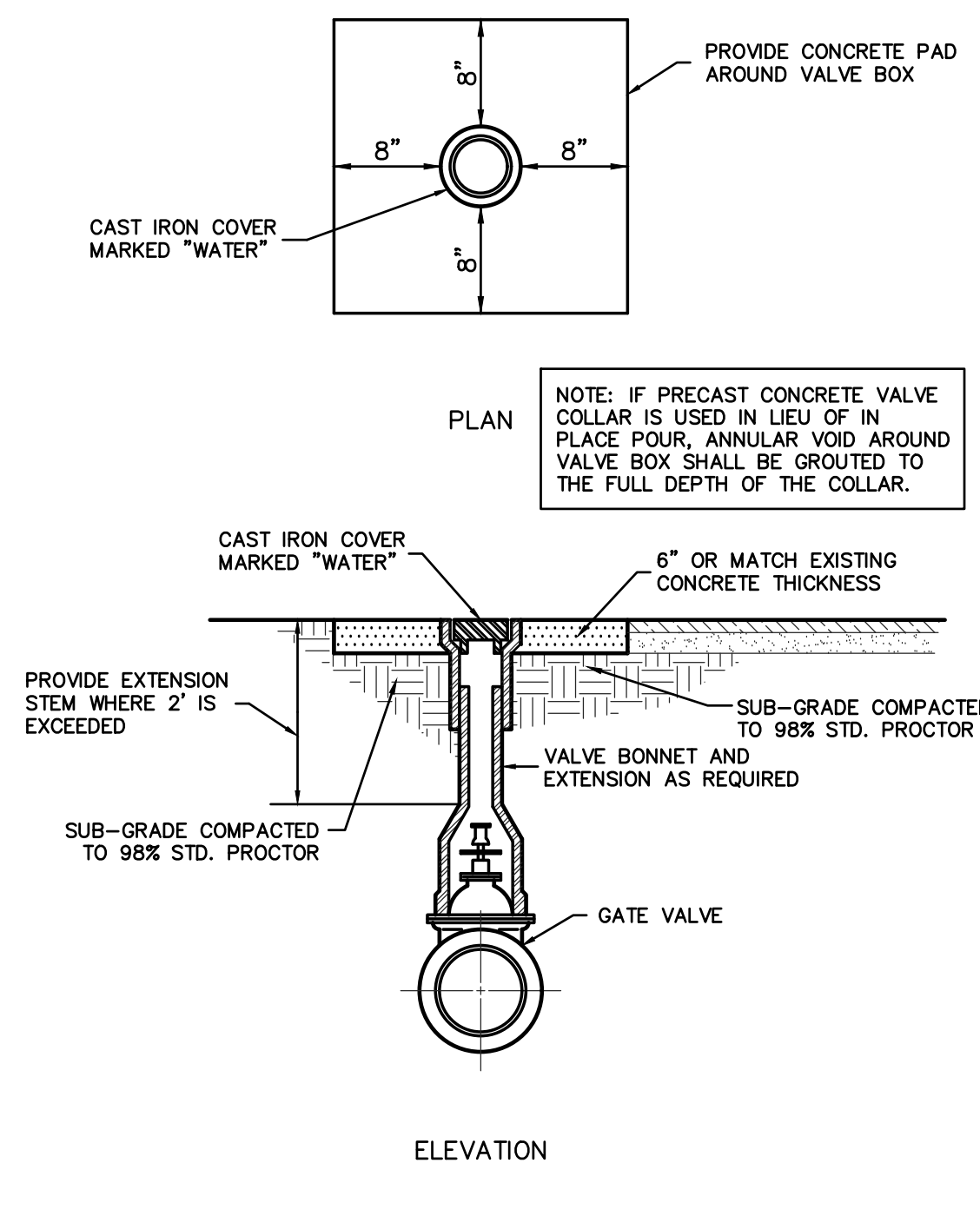
DRAWING LEGEND		
DESCRIPTION	PROPOSED	EXISTING
SANITARY SEWER	SS	SS
UNDERGROUND WATER LINE	W	W
FORCE MAIN	FM	FM
STORM DRAINAGE PIPE	SD	SD
UNDERGROUND TELEPHONE LINE	T	T
UNDERGROUND TELEPHONE CONDUIT	TC	TC
UNDERGROUND GAS LINE	12" G	12" G
DITCH CENTERLINE	DC	DC
TOP OF CURB & GUTTER ELEVATIONS	TC=90.00 G=89.50	EX TC=90.00 EX G=89.50
SPOT ELEVATION	X=90.00	X=90.00
FIRE HYDRANT		
SEWER MANHOLE		
WATER VALVE		
TELEPHONE MANHOLE		
LIGHT POLE		
SIGN		
WATER METER		
BENCHMARK		
CONCRETE MONUMENT FOUND		
GUY POLE		
IRON PIN FOUND		
IRON PIN SET		
TELEPHONE PEDESTAL		
POWER POLE		
HANDICAP SPACE		
SEDIMENT BASIN MARKER W/NOTCH		



TRACER WIRE INSTALLATION  
DETAIL FOR PVC PIPE  
N.T.S.



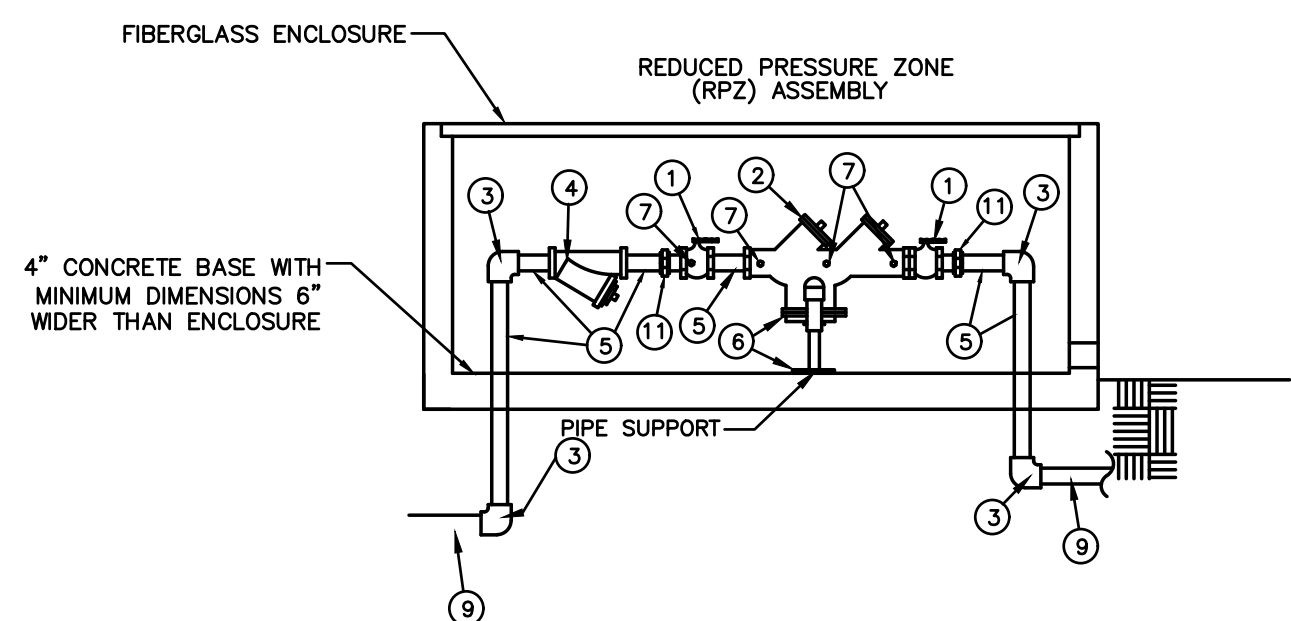
SEPERATION DETAIL  
N.T.S.



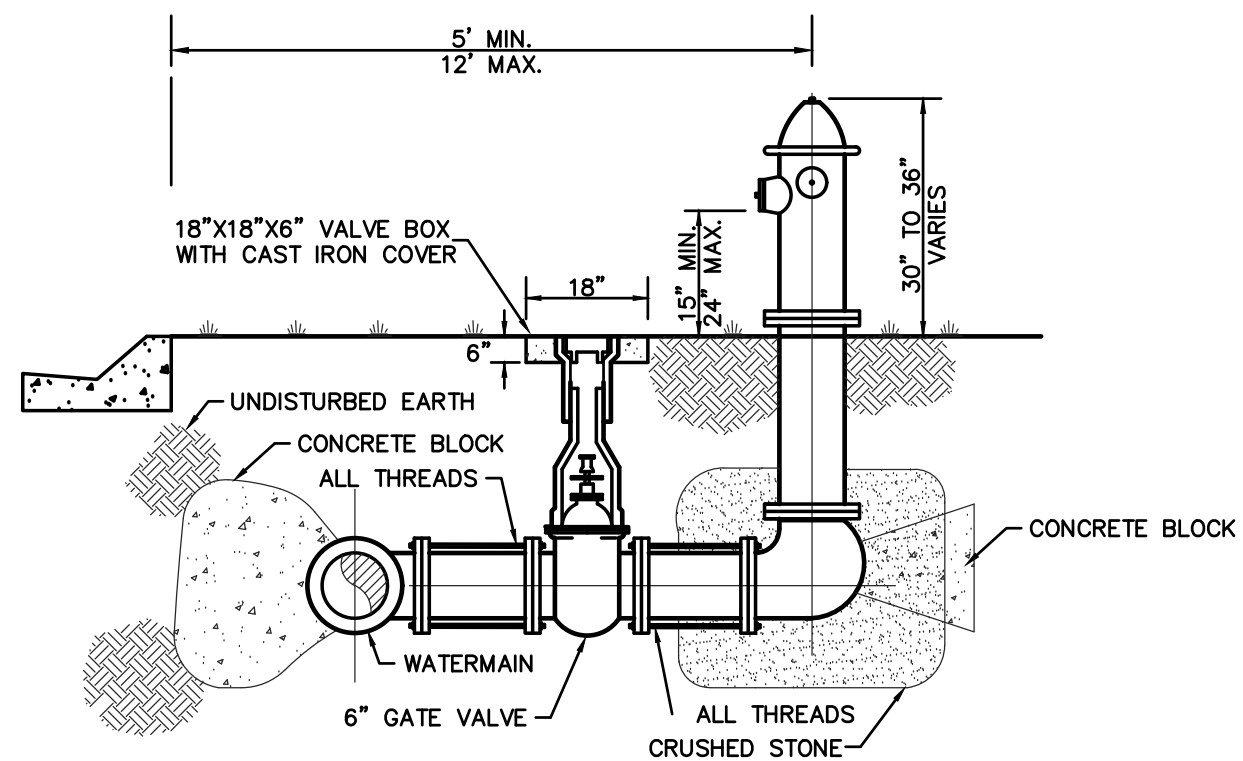
VALVE BOX DETAIL  
N.T.S.

RPZ MATERIALS		
ITEM	QUAN	DESCRIPTION
1	2	FULL PORT BALL VALVE
2	1	REDUCED PRESSURE ZONE DEVICE
3	4	BRASS ELLS THREADED OR FLANGED
4	1	STRAINER W/ RPZ DEVICE(OPTIONAL)
5	6	BRASS OR SHC 80 NIPPLES CUT TO LENGTH
6		PIPE STAND MIN.12"
7	4	BRASS PLUGS INSERTED IN TEST COCKS
8		2" X 2" DRAIN
9		SCH 80 PVC
10		ENCL. PER CITY SPECS FOR TYP. METER PIT
11	2	UNION

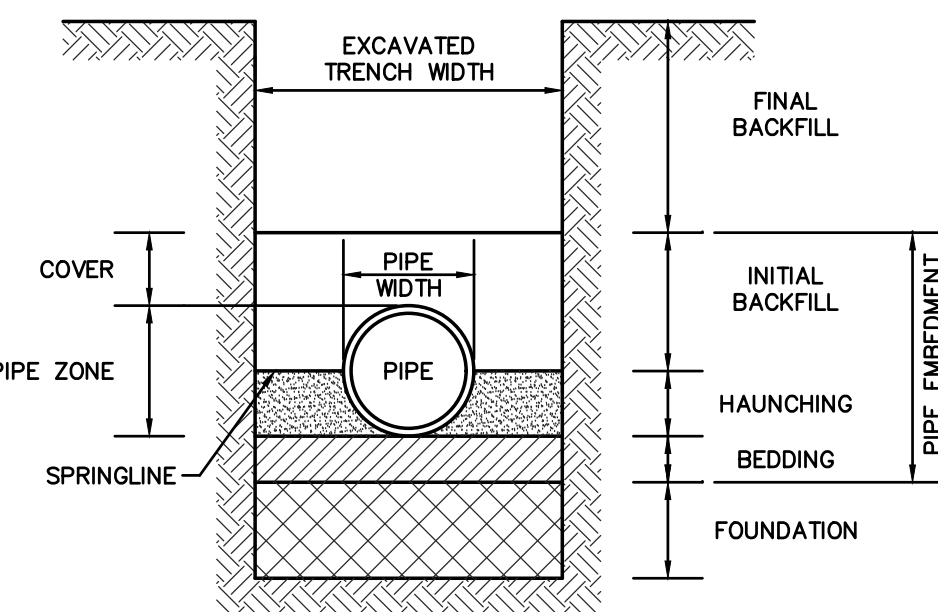
- NOTES:
- FOR FINAL APPROVAL, ASSEMBLY MUST BE CENTERED IN ENCLOSURE (IF APPLICABLE). UNDER NO CONDITION WILL ANY CONNECTION BE ALLOWED BETWEEN THE SERVICE METER AND A BACKFLOW PREVENTER USED FOR THE SYSTEM CONTAINMENT. BACKFLOW PREVENTER SHALL ALWAYS BE INSTALLED DOWNSTREAM OF METER.
  - IF A PRESSURE MONITOR IS TO BE INSTALLED, ADD A TEE, VALVE, FITTINGS, AND MOUNT ON SUPPLY SIDE PRIOR TO BACKFLOW PREVENTER. UNDER NO CIRCUMSTANCE SHALL TEST PORTS BE MODIFIED OR UTILIZED FOR THIS OR OTHER APPLICATION, OTHER THAN BACKFLOW DEVICE TESTING.



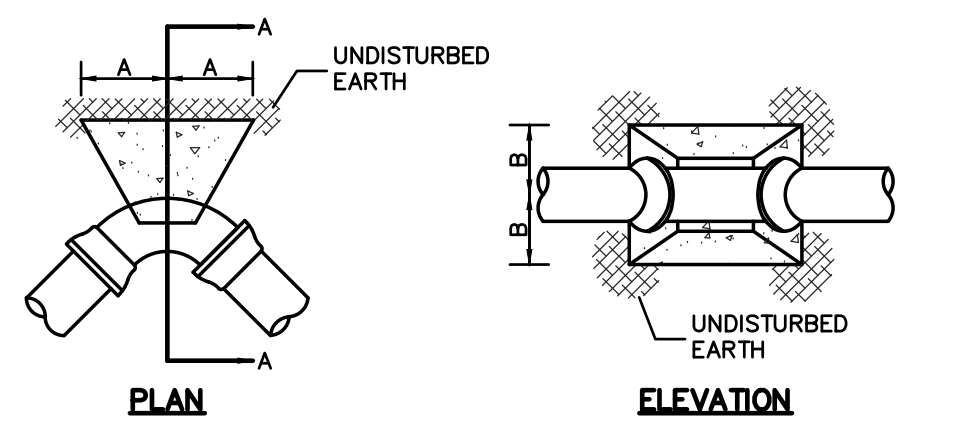
REDUCED PRESSURE ZONE BFP  
N.T.S.



FIRE HYDRANT DETAIL  
N.T.S.

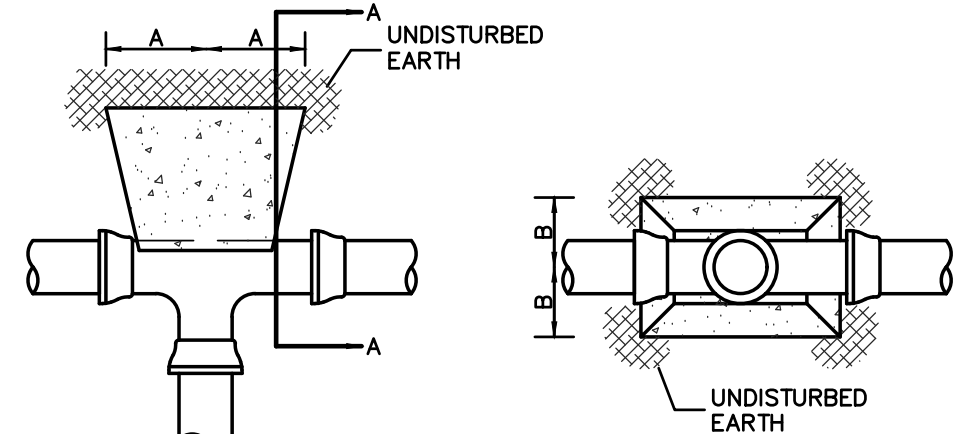


PIPE BEDDING DETAIL  
N.T.S.



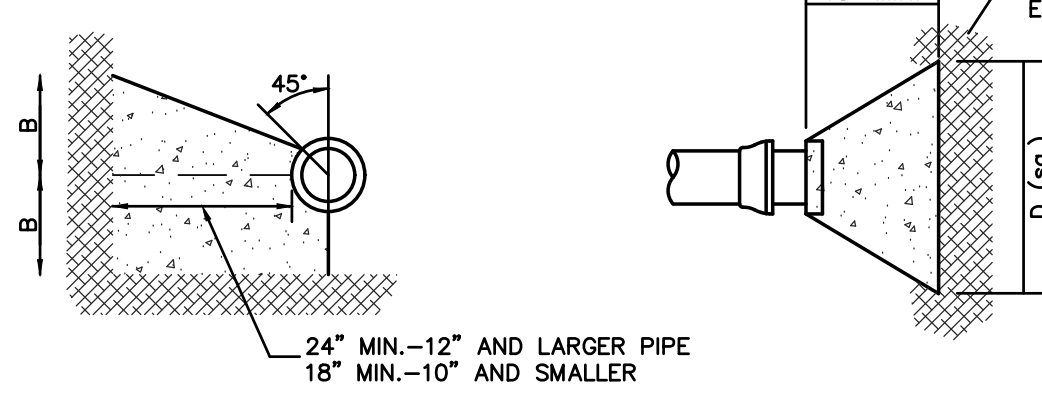
PLAN

ELEVATION



PLAN

ELEVATION

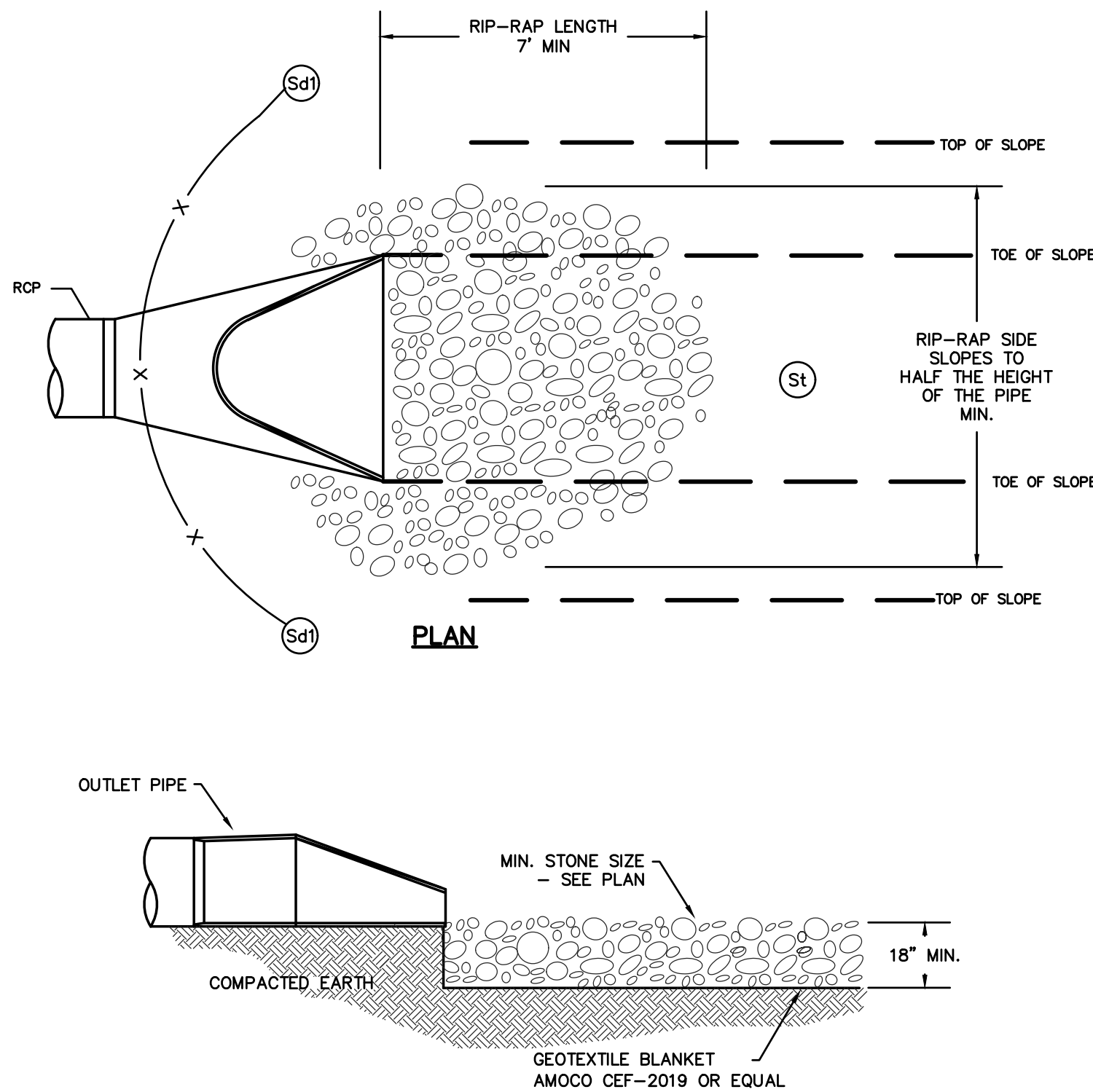


SECTION A-A

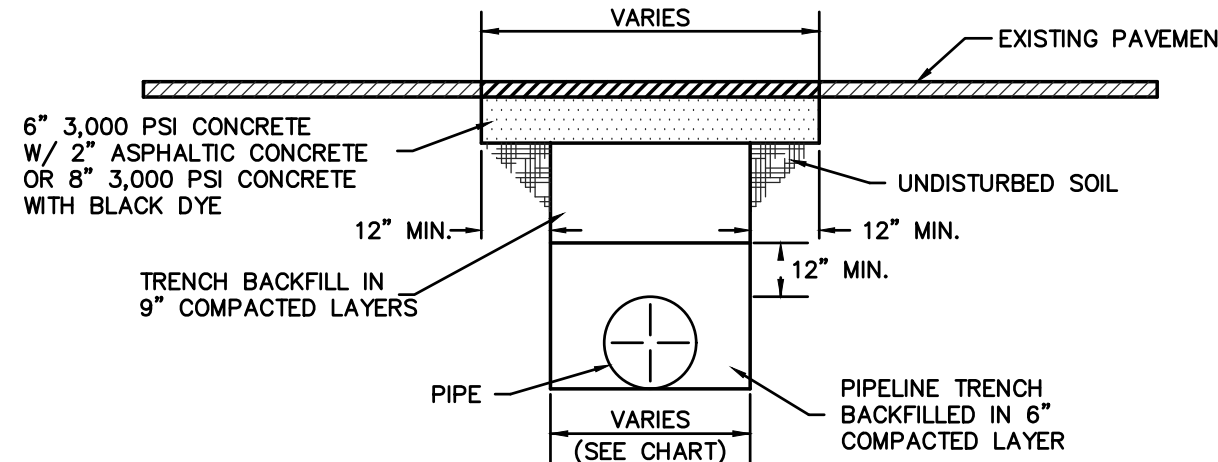
PLAN & ELEVATION

STANDARD THRUST BLOCKS FOR WATER MAIN AND FORCE MAINS  
TO BE USED IN CONJUNCTION WITH JOINT RESTRAINT  
N.T.S.

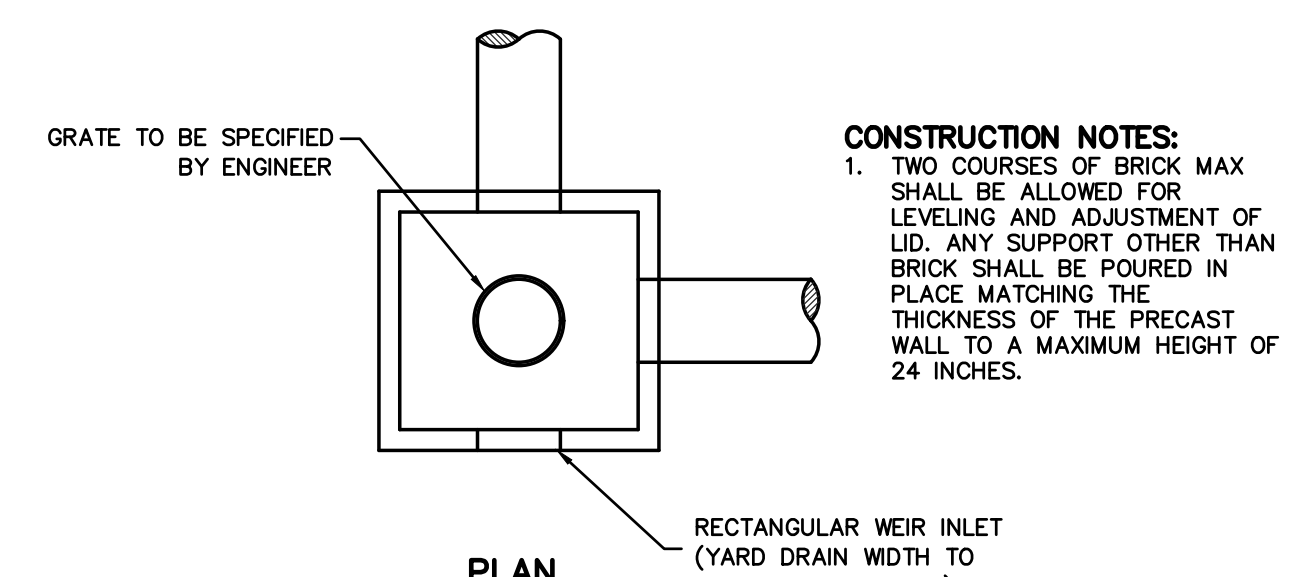
TYPE	SIZE	1/4 BENDS		1/8 BENDS		1/16 BENDS		TEES		PLUGS			
		A	B	A	B	A	B	A	B	C	D		
TYPE 1 4,000 PSF SOIL	6"	8"	10"	6"	8"	3"	8"	8"	8"	10"	15"		
	8"	12"	12"	8"	10"	5"	9"	9"	12"	12"	20"		
	10"	16"	14"	10"	12"	6"	10"	11"	14"	14"	25"		
	12"	19"	16"	12"	14"	8"	11"	14"	16"	16"	30"		
	14"	23"	18"	14"	16"	10"	12"	16"	18"	18"	34"		
	16"	26"	20"	16"	18"	11"	13"	18"	20"	20"	38"		
TYPE 2 2,000 PSF SOIL	6"	16"	10"	9"	10"	6"	8"	10"	12"	10"	21"		
	8"	22"	13"	12"	13"	8"	10"	13"	16"	12"	29"		
	10"	26"	17"	14"	17"	10"	13"	16"	20"	14"	36"		
	12"	29"	21"	16"	21"	11"	16"	18"	24"	16"	41"		
	14"	35"	24"	19"	24"	12"	20"	22"	27"	18"	48"		
	16"	38"	27"	21"	27"	12"	24"	24"	30"	20"	54"		



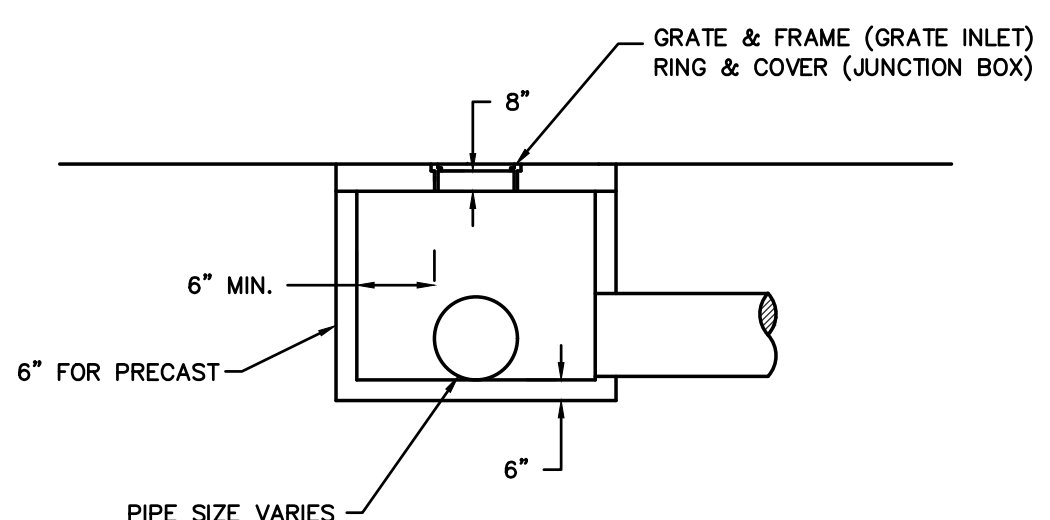
PRECAST FLARED END SECTION  
N.T.S.



PAVEMENT REMOVAL & REPLACEMENT  
N.T.S.



JUNCTION BOX / GRATE INLET  
N.T.S.

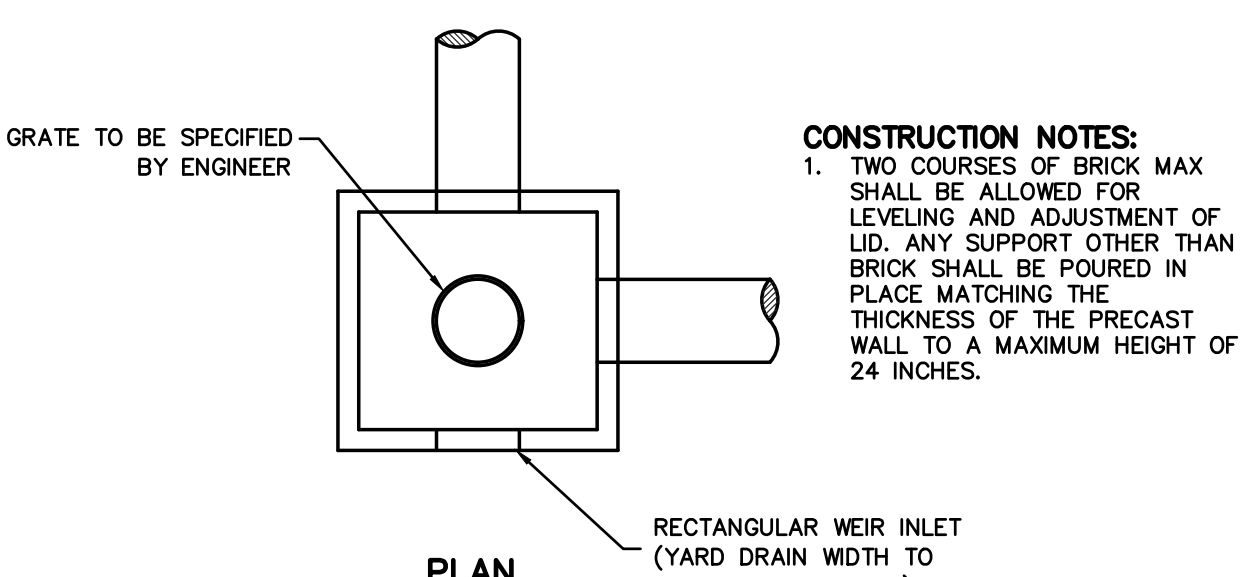


SECTION

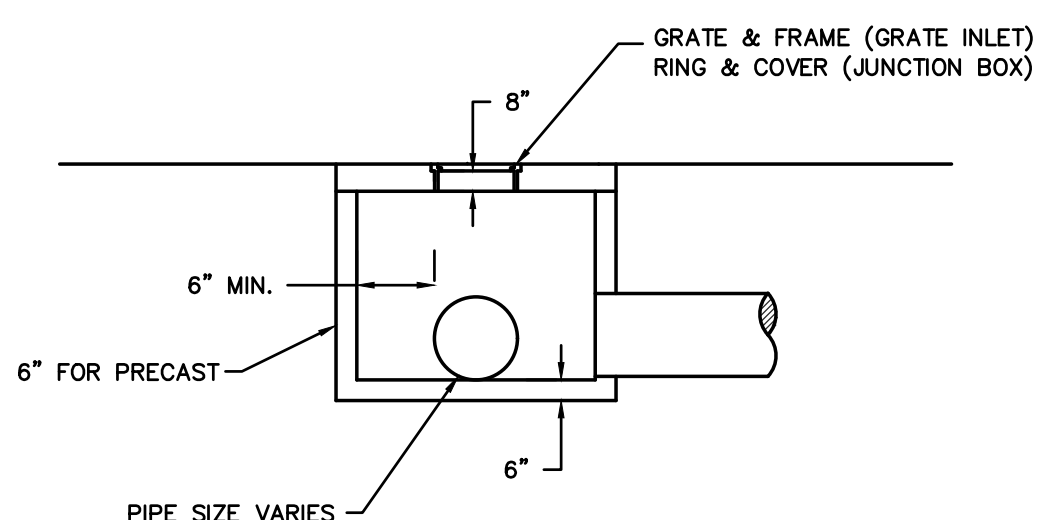
JUNCTION BOX / GRATE INLET  
N.T.S.

PIPE DIAMETER	MAXIMUM TRENCH WIDTH 0 - 6" CUT DEPTH	MAXIMUM PAYMENT WIDTH 0 - 6" CUT DEPTH
6" TO 15"	16" + DIA.	40" + DIA.
18" TO 21"	20" + DIA.	44" + DIA.
24" TO 30"	24" + DIA.	48" + DIA.
33" TO 42"	36" + DIA.	60" + DIA.
48"+	36" + DIA.	60" + DIA.

NOTE  
MAXIMUM PAYMENT WIDTH FOR CUT DEPTH  
OVER 6 FEET SHALL BE 8 FEET UNLESS NOTED  
OTHERWISE ON PLANS.



- CONSTRUCTION NOTES:
- TWO COURSES OF BRICK MAX SHALL BE ALLOWED FOR LEVELING AND ADJUSTMENT OF LID. ANY SUPPORT OTHER THAN BRICK SHALL BE POURED IN PLACE MATCHING THE THICKNESS OF THE PRECAST WALL TO A MAXIMUM HEIGHT OF 24 INCHES.



**P.C. Simonton & Associates, Inc.**  
Consulting Engineers

309 NORTH MAIN STREET  
P.O. BOX 649  
HINESVILLE, GA 31313  
TEL: (912) 368-5212

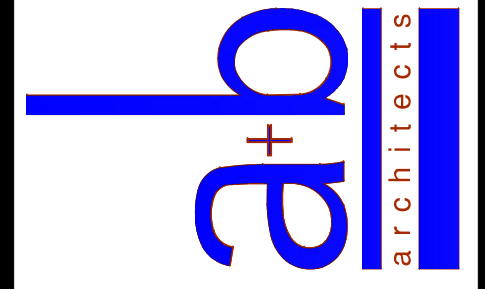
1050 PARKSIDE COMMONS  
SUITE 101  
GREENSBORO, GA 30642  
TEL: (706) 454-0870

Altman + Barrett

LEVEL II CERTIFICATION # 55538



DATE: 11/06/2017



Altman + Barrett  
a r c h i t e c t s  
P.O. BOX 665 - 117 WEST MAIN ST.  
HAHIRA, GEORGIA 31632  
PHONE # (229) 585-9018

DATE: 11/09/2017

DRAWN: M. BARROW

CHECKED: M. BARROW

REVISIONS: 1

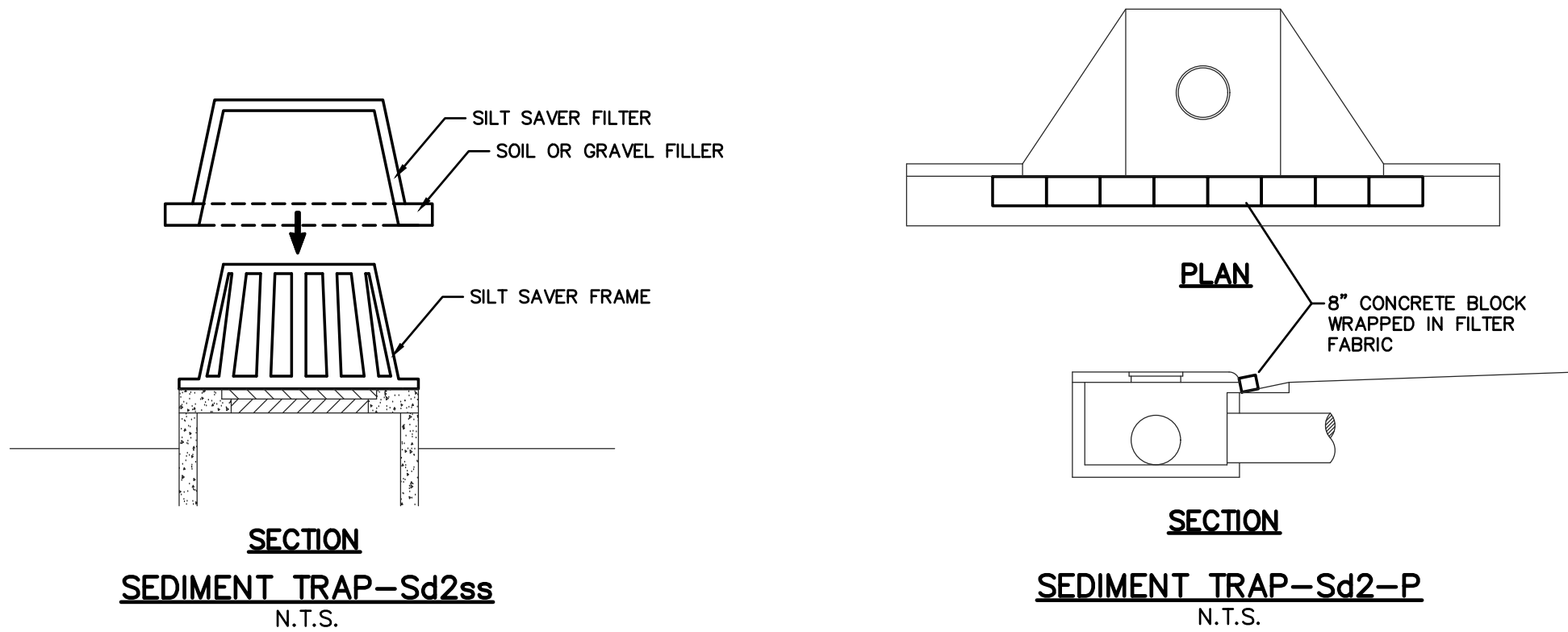
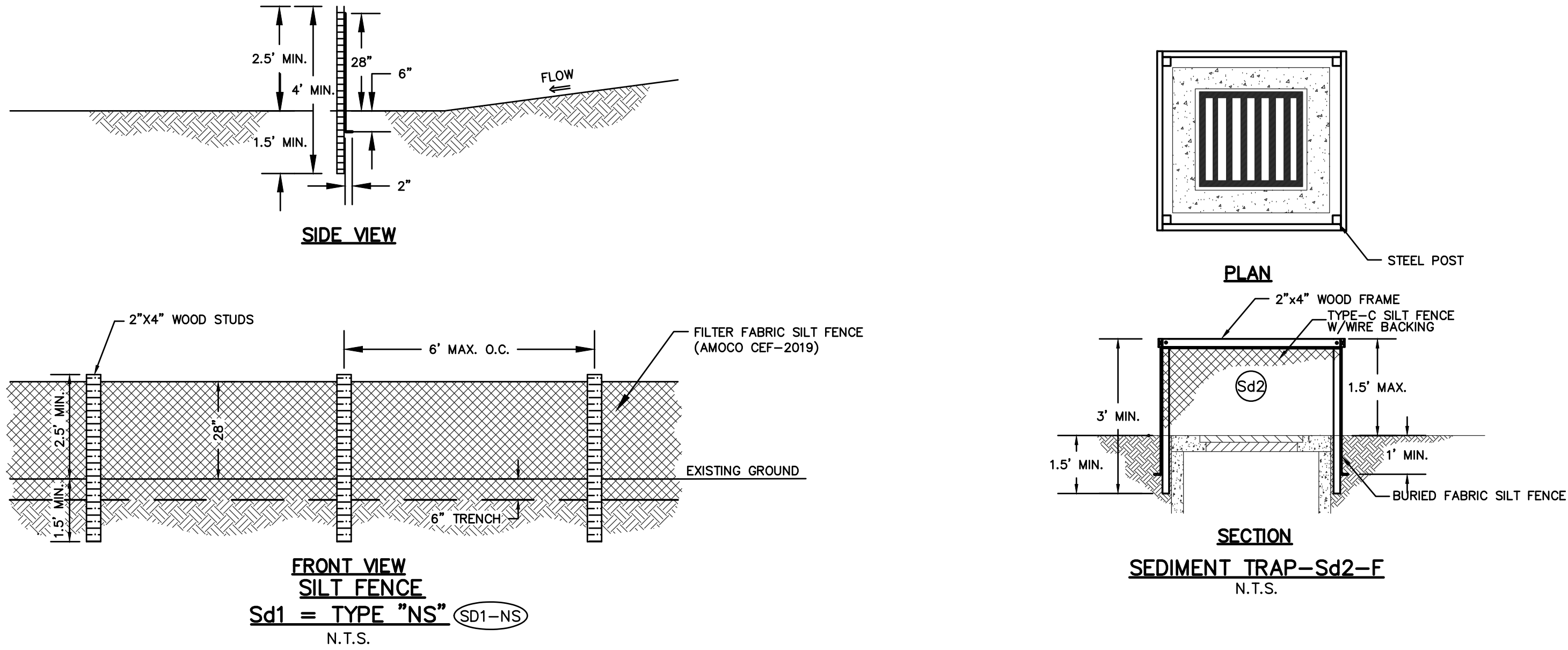
www.altmanbarrowarchitects.com

Demolition, Utility Relocation, Grading  
Berrien County Football Stadium  
Berrien County School System  
500 Smith Ave, Nashville, Georgia 31639

PHASE 1  
DETAILS  
C5001  
FACILITY NO: 610-1601  
PROJECT NO: 17026



LEGEND FOR EROSION AND SEDIMENT CONTROL PRACTICES		
CODE	PRACTICE	DESCRIPTION
	CONSTRUCTION EXIT	A STONE PAD LOCATED AT THE JOB SITE EXIT TO REMOVE MUD AND DEBRIS FROM TIRES AND PREVENT TRACKING OR FLOW OF MUD ONTO PUBLIC ROADS.
	SILT FENCE 36" WIDE	A TEMPORARY SEDIMENT BARRIER CONSISTING OF A FILTER FABRIC STRETCHED ACROSS AND ATTACHED TO SUPPORTING POSTS AND ENTRENCHED. 6 MO. OR LONGER PROJECT LIFE.
	SILT FENCE 36" WIRE BACKED	Sd1-C HAS 6 MO. OR LONGER PROJECT LIFE. WIRE BACKING IS NECESSARY BECAUSE FABRIC ALLOWS 3 TIMES THE FLOW RATE OF TYPE A SILT FENCE.
	INLET SEDIMENT TRAP	TEMPORARY DEVICE TO PREVENT SILT FROM ENTERING STORM DRAINAGE SYSTEMS, PRIOR TO PERMANENT STABILIZATION OF THE DISTURBED AREA.
	"PIGS IN BLANKET"	CURB INLET PROTECTION "PIGS IN BLANKET" SHOULD BE USED ONCE PAVEMENT IS ALREADY IN PLACE.
	"SILT SAVER"	SILT SAVER IS A MANUFACTURED INLET SEDIMENT TRAP THAT INSTALLED OVER THE GRATE INLET TO PREVENT SILT FROM ENTERING THE SYSTEM WHILE THE SITE IS UNDER CONSTRUCTION.
	FILTER FABRIC AND FRAME	FILTER FABRIC WRAPPED AROUND A FRAME FOR USE IN AN AREA WHERE SITE IS RELATIVELY FLAT(<5%)
	BAFFLE BOX	FOR INLETS RECEIVING HIGHER VOLUME OR VELOCITY. SLATS OR PLYWOOD WITH HOLES DRILLED INTO AND GRAVEL PLACED AROUND THE BOX.
	STORM DRAIN OUTLET PROTECTION	PAVED OR ROCK SECTION BELOW A STORM DRAIN OUTLET FOR PROTECTION FROM EROSION CAUSED BY WATER TURBULENCE OR HIGH VELOCITIES.
	DISTURBED AREA STABILIZATION (WITH MULCHING ONLY)	APPLYING PLANT RESIDUES OR OTHER SUITABLE MATERIALS NOT PRODUCED ON THE SITE TO THE SOIL SURFACE SUCH AS GRAIN STRAW, HAY, PINE NEEDLES, WOOD WASTE AND SHREDDED RESIDUES.
	DISTURBED AREA STABILIZATION (WITH TEMPORARY SEEDINGS)	ESTABLISHING TEMPORARY VEGETATIVE COVER SUCH AS RYE, SUDAGRASS, WHEAT, OR RYEGRASS ON DISTURBED AREAS.
	DISTURBED AREA STABILIZATION (WITH PERMANENT VEGETATION)	ESTABLISHING PERMANENT VEGETATIVE COVER SUCH AS TREES, SHRUBS, VINES, GRASSES, SOD, OR LEGUMES ON DISTURBED AREAS.
	CHECK DAM - HAYBALE TYPE	SMALL TEMPORARY BARRIER, GRADE CONTROL STRUCTURE, OR DAM CONSTRUCTED ACROSS A SWALE, DRAINAGE DITCH, OR AREA OF CONCENTRATED FLOW.
	CHECK DAM - STACKED EMBEDDED HAYBALES	STACKED EMBEDDED HAYBALES MAY BE USED AS TEMPORARY CHECK DAMS. IN DRAINAGE AREAS LESS THAN 1 ACRE.
	CHECK DAM - STONE TYPE	STONE CHECK DAM CONSTRUCTED OF GRADED SIZE 2-10 INCH STONE. CENTER IS LOWER THAN SIDES.
	TURBIDITY MONITORING POINT	LOCATION FOR MONITORING TURBIDITY IN STORM WATER RUNOFF.



## Ds1 DISTURBED AREA STABILIZATION (W/MULCHING ONLY)

### SPECIFICATIONS

A. For temporary protection of critical areas without seeding. This standard applies to grades or cleared areas which may be subjected to erosion for 6 months or less, where seeding may not have a suitable growing season to produce an erosion retardant cover, but which can be stabilized with a mulch cover.

#### Site Preparation

- Grade, as needed and feasible, to permit the use of equipment for applying and anchoring mulch.
- Install needed erosion control measures as required such as dikes, diversions, berms, terraces and sediment barriers.
- As needed and feasible, loosen compact soil to a minimum depth of 3 inches.

#### Mulching Materials

- Dry straw or hay - spread at a rate of 2 1/2 tons per acre.
- Wood waste, chips, sawdust or bark - spread 2 to 3 inches deep (about 6 to 9 tons per acre).
- Erosion control matting or netting, such as excelsior, jute, textile and plastic matting and netting - applied in accordance with manufacturers recommendations.
- Outback asphalt, slow curing - applied at 1200 gallons per acre (or 1/4 gallon per sq. yd.)
- Polyethylene film - secured over banks or stockpiled soil material for temporary protection.

#### Applying and Anchoring Mulch

- Apply straw or hay mulch uniformly by hand or mechanically. Anchor as appropriate and feasible. It may be pressed into the soil with a disk harrow with the disk set straight or with a special "pucker disk." The disk may be smooth or serrated and should be 20 inches or more in diameter and 8 to 12 inches apart. The edges of the disk should be dull enough not to cut the mulch but press it into the soil leaving much of it in an erect position.
- Straw hay mulch spread with special blower-type equipment may be anchored with emulsified asphalt (Grade AE-5 or SS-1). The asphalt emulsion must be sprayed onto the mulch as it is ejected from the machine. Use 100 gallons of water per acre.
- Spread wood waste uniformly on slopes that are 3:1 and flatter. No anchoring is needed.
- Commercial matting and netting. Follow manufacturer's specification included with the material.
- Apply asphalt so area has uniform appearance. (Note: Use in areas of pedestrian traffic could cause problems or "tracking in" or damage to shoes, clothing, etc.)

B. To conserve moisture and control weeds in nurseries, ornamental beds, around shrubs, and on bar areas on lawns.

#### Mulching Materials

Use one of the materials given below and apply at thickness indicated.

Material	Depth
1. Grain straw or grass hay	6" to 10"
2. Pine needle	4" to 6"
3. Wood waste (sawdust, bark, chips)	4" to 8"
4. Shredded residues (crops, leaves, etc.)	4" to 6"

- Completely cover area with black polyethylene film and hold in place by placing soil on the outer edge.
- When using organic mulches, apply 20-30 pounds of nitrogen in addition to the normal amount needed for plant growth to offset the tie up of N by decomposition of mulch.

## Dv DUST CONTROL ON DISTURBED AREAS

### PURPOSE

A. To prevent surface and air movement of dust from exposed surfaces.  
B. To reduce the presence of airborne substances which may be harmful or injurious to human health, welfare, or safety, or to animals or plant life.

#### Temporary Methods

- Irrigation. This is generally done as an emergency treatment. Site is sprinkled with water until the surface is wet.
- Mulching - See Ds1- Disturbed Area Stabilization ( with Mulching only)
- Vegetative Cover - See Ds2 - Disturbed Area Stabilization (with Temporary Seeding)

#### Permanent Methods

- Permanent Vegetation - See Ds3 - Disturbed Area Stabilization (with Permanent Vegetation)

## Ds2 SPECIES AND PLANTING SCHEDULE

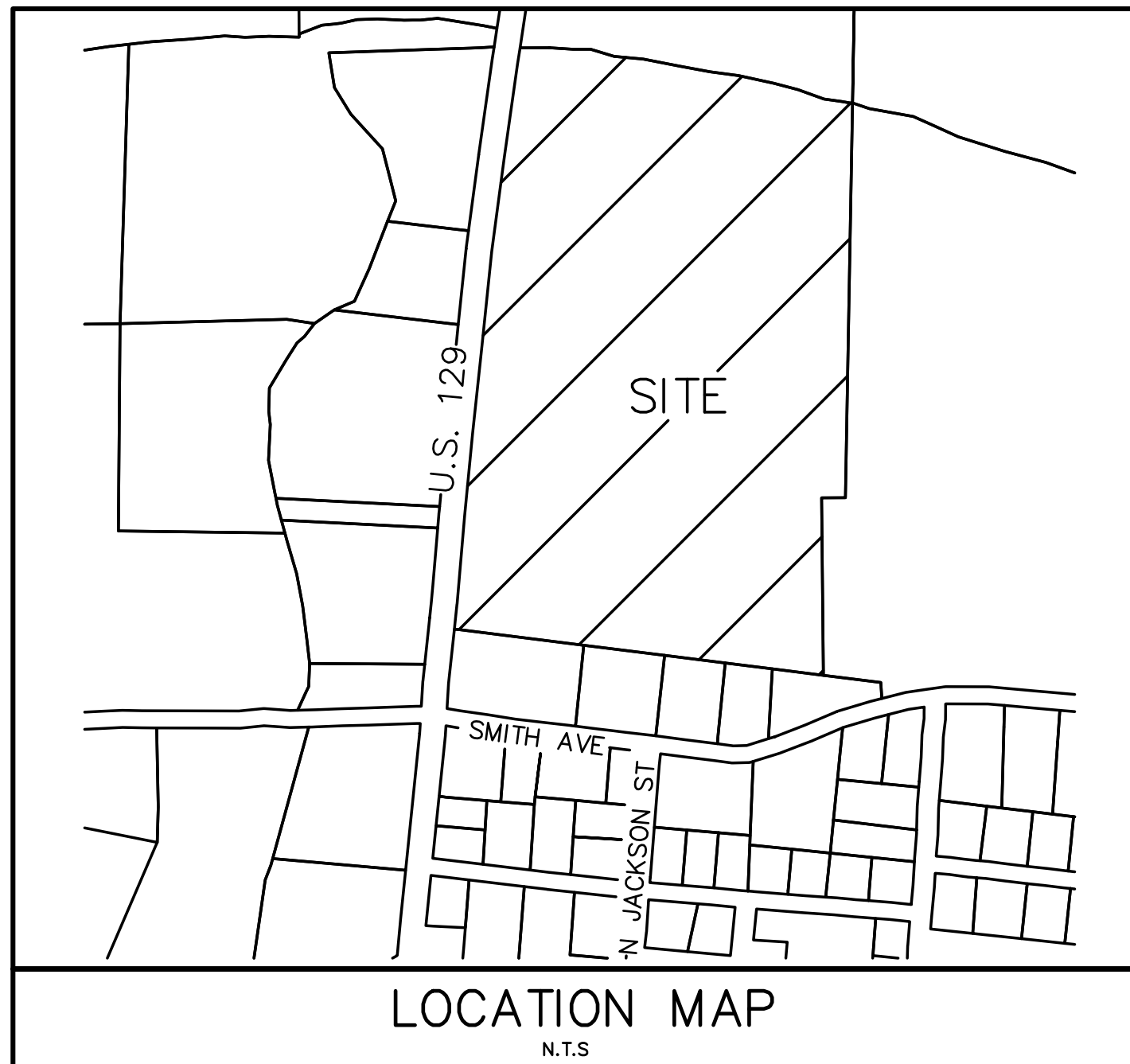
SPECIES	BROADCAST RATES 1/- PLS 2/ PER ACRE 1000 S.F.		PLANTING DATES BY RESOURCE		REMARKS
	1/-	2/	RESOURCE AREA 3/	AREAS *	
RYEGRASS, ANNUAL ALONE	40 lbs.	0.9 lb.	M-L	J F M A M J J A S O N D	227,000 SEED PER POUND. DENSE COVER. VERY COMPETITIVE AND IS NOT TO BE USED IN MIXTURES.

\* (DARK LINES REPRESENT OPTIMUM DATES, GRAY LINES INDICATE PERMISSIBLE BUT MARGINAL DATES.)

## Ds3 SPECIES AND PLANTING SCHEDULE

SPECIES	BROADCAST RATES 1/- PLS 2/ PER ACRE 1000 S.F.		PLANTING DATES BY RESOURCE		SPECIFICATIONS
	1/-	2/	RESOURCE AREA 3/	AREAS *	
BERMUDA, COMMON HULLED SEED ALONE	10 LBS.	0.2 LB.	P	J F M A M J J A S O N D	1,787,000 SEED PER POUND. QUICK COVER. LOW GROWING AND SOD FORMING. FULL SUN. GOOD FOR ATHLETIC FIELDS.
WITH OTHER PERENNIALS	6 LBS.	0.1 LB.	P	J F M A M J J A S O N D	
BERMUDA, COMMON UNHULLED SEED WITH TEMPORARY COVER WITH OTHER PERENNIALS	10 LBS.	0.2 LB.	P	J F M A M J J A S O N D	PLANT WITH WINTER ANNUALS. PLANT WITH TALL FESCUE.
BERMUDA SPRIGS COASTAL, COMMON, MIDLAND, OR TIFT 44 COASTAL, COMMON, TIFT 44 TIFT 78	40 CU. FT. 0.9 CU.FT. OR SOD PLUGS 3' X 3'	0.1 LB.	M-L	J F M A M J J A S O N D	A CUBIC FT. CONTAINS APPROXIMATELY 800 SPRIGS. A BUSHEL CONTAINS 1.25 CF. OR APPROXIMATELY 800 SPRIGS. SAME AS ABOVE.
			P	J F M A M J J A S O N D	SOUTHERN COASTAL PLAIN ONLY

\* (DARK LINES REPRESENT OPTIMUM DATES, GRAY LINES INDICATE PERMISSIBLE BUT MARGINAL DATES.)



## MULCHING RATES FOR PERMANENT COVER

TYPE OF MULCH	RATE PER ACRE	NOTES
Dry straw	2 Tons	Free of weed seeds.
Dry hay	2.5 Tons	Free of weed seeds.
Wood Cellulose	500 lbs. 1000 lbs.	Slope less than 3/4:1 Slope greater than 3/4:1
Wood Pulp Fiber	500 lbs. 1000 lbs.	Slope less than 3/4:1 Slope greater than 3/4:1
Sericea Lespedeza Hay	3 Tons	Containing mature seeds.
Pine Straw or Bark	3 inches thick	For bedding. Not for seeding.
Bituminous treated roving	See DOT specs.	Use on slopes, in ditches, or dry waterways.

- Mulching is not required for temporary grassing.
- Mulch shall be applied to cover 75% of the soil surface.
- Sod does not require mulch.

## FERTILIZER REQUIREMENTS

TYPE OF SPECIES	YEAR	ANALYSIS OR EQUIVALENT	RATE	N TOP DRESSING RATE
Cool season grasses	First	6-12-12	1500 lbs./ac.	50-100 lbs./ac. 1/ 2/
	Second	6-12-12	1000 lbs./ac.	30
Cool season grasses legumes	First	8-12-12	1500 lbs./ac.	0-50 lbs./ac. 1/
	Second	0-10-10	1000 lbs./ac.	-
Ground covers	First	10-10-10	1500 lbs./ac.	-
	Second	10-10-10	1000 lbs./ac.	-
Pine seedlings	First	20-10-5	one 21-gram pallet per seedling placed in the closing hole	-
	Second	0-10-10	700 lbs./ac.	-
Shrub lespedeza	First	0-10-10	700 lbs./ac. 4/	-
	Second	0-10-10	700 lbs./ac. 4/	-
Temporary cover crops seeded clone	First	10-10-10	500 lbs./ac.	30 lbs./ac. 5/
	Second	10-10-10	500 lbs./ac.	30 lbs./ac. 5/
Warm season grasses	First	6-12-12	1500 lbs./ac.	50-100 lbs./ac. 2/ 6/
	Second	6-12-12	800 lbs./ac.	50-100 lbs./ac. 2/
Warm season grasses and legumes	First	6-12-12	1500 lbs./ac.	50 lbs./ac. 6/
	Second	0-10-10	1000 lbs./ac.	400 lbs./ac.

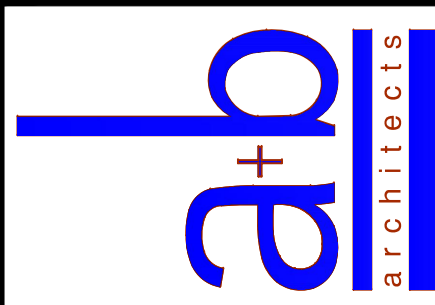
- Apply in spring following seeding.
- Apply in split applications when high rates are used.
- Apply in 3 split applications.
- Apply when plants are pruned.
- Apply to grass species only.
- Apply when plants grow to height of 2 to 4 inches.

Altman + Barrett

LEVEL II CERTIFICATION # 55538



DATE: 11/06/2017



Altman + Barrett  
a r c h i t e c t s  
P.O. BOX 665 - 117 WEST MAIN ST.  
HAHIRA, GEORGIA 31632  
PHONE # (229) 585-9018

DATE: 11/09/2017  
DRAWN: M. BARROW  
CHECKED: M. BARROW  
REVISIONS: 1  
www.altmanbarrowarchitects.com

Demolition, Utility Relocation, Grading  
Berrien County Football Stadium  
Berrien County School System  
500 Smith Ave, Nashville, Georgia 31639  
PHASE 1

PCS No. 2017-83



309 NORTH MAIN STREET  
P.O. BOX 649  
HINESVILLE, GA 31313  
TEL: (912) 368-8212  
1050 PARKSIDE COMMONS  
SUITE 101  
GREENSBORO, GA 30642  
TEL: (706) 454-0870

C5002  
FACILITY NO: 610-1601

DRRAWINGS ARE THE PROPERTY OF THE ARCHITECT AND SHALL NOT BE REPRODUCED OR USED WITHOUT WRITTEN PERMISSION AND CREDIT © 2017 ALTMAN + BARRETT ARCHITECTS, P.C.

PROJECT NO: 17026









- NOTES:**
1. EXISTING BUILDING IS TO BE DEMOLISHED IN ITS ENTIRETY. REMOVE EXISTING ELECTRICAL AND TELECOM UTILITIES.
  2. EXISTING FEEDER TO BE REMOVED (TYPICAL FOR HATCHED LINES)
  3. EXISTING TELECOM FEEDER TO BE REMOVED (TYPICAL FOR HATCHED LINES)
  4. EXISTING MUSCO LIGHT TO BE RE-LOCATED IN PHASE 2.
  5. EXISTING SCOREBOARD AND ASSOCIATED ELECTRICAL SERVICE TO REMAIN. EXISTING CONTROLS CABLING SHALL BE SPliced AND EXTENDED TO NEW PRESSBOX IN PHASE 2. COORDINATE EXACT REQUIREMENTS WITH OWNER.
  6. EXISTING POLE TO REMAIN.
  7. EXISTING POLE TO BE REMOVED. COORDINATE WITH UTILITY COMPANY.

SITE PLAN - ELECTRICAL DEMOLITION 1  
SCALE: 1" = 30'-0"

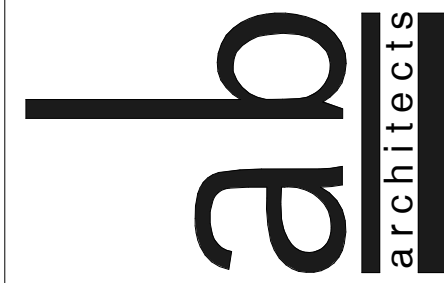


Demolition, Utility Relocation, Grading  
Berrien County Football Stadium  
Berrien County School System  
500 Smith Ave, Nashville, Georgia 31639

PHASE 1  
**E1001**  
FACILITY NO: 610-1601  
DRAWINGS ARE THE PROPERTY OF THE ARCHITECT AND SHALL NOT BE REPRODUCED OR USED WITHOUT WRITTEN PERMISSION AND CREDIT  
© 2017 ALTMAN + BARRETT ARCHITECTS, P.C.  
PROJECT NO: 17026

DATE: 11.09/2017
DRAWN: GJC
CHECKED: MOW
REVISIONS: 1.
www.altmanbarrettarchitects.com

Altman + Barrett  
a r c h i t e c t s  
P.O. BOX 665 - 117 WEST MAIN ST.  
HAHIRA, GEORGIA 31632  
PHONE # (229) 585-9018



Altman + Barrett



